

All Krome Drip Trays are made of Stainless Steel 304 Grade



C619



C602



C631



C630

WALL MOUNT DRIP TRAYS

Part No.	C602	C608	C609	C612	C619	C646
Size (LxW)	6"x6"	6"x4"	10"x6"	12"x6"	14"x6"	4" x 4.5"
Type	No Drain					
Material	Stainless Steel 304					
Finish	Brushed					

Part No.	C630	C631	C809
Size (LxW)	6"x6"	10"x6"	6"x4"
Type	With Drain		
Material	Stainless Steel 304		
Finish	Brushed		

Features

- Solid 1.2mm Stainless steel 304 construction.
- C958 Included.


C613

C818

C4224

SURFACE DRIP TRAYS WITH DRAIN

Part No.	C613	C614	C615	C616	C617	C618
Size (LxW)	12"x5"	16"x5"	18"x5"	20"x5"	24"x5"	30"x5"
Type	With Drain	With Drain	With Drain	With Drain	With Drain	With Drain
Material	Stainless Steel 304	Stainless Steel 304	Stainless Steel 304	Stainless Steel 304	Stainless Steel 304	Stainless Steel 304
Finish	Brushed	Brushed	Brushed	Brushed	Brushed	Brushed

Part No.	C620	C624	C625	C627	C638	C818
Size (LxW)	36"x5"	12"x18"	18"x8"	20"x8"	45"x7"	12"x5"
Type	With Drain	With Drain	With Drain	With Drain	With Drain	With Drain
Material	Stainless Steel 304	Stainless Steel 304	Stainless Steel 304	Stainless Steel 304	Stainless Steel 304	Stainless Steel 304
Finish	Brushed	Brushed	Brushed	Brushed	Brushed	PVD Vibrant Gold

Part No.	C819	C4224	C4230	C4239	C4245
Size (LxW)	45"x5"	24"x8"	30"x8"	39"x8"	45"x8"
Type	With Drain	With Drain	With Drain	With Drain	With Drain
Material	Stainless Steel 304	Stainless Steel 304	Stainless Steel 304	Stainless Steel 304	Stainless Steel 304
Finish	Brushed	Brushed	Brushed	Brushed	Brushed

Features

- Solid 1.2mm Stainless steel 304 construction.
- Includes 3½" Standard Drain Assembly, C598.


C632

C641

C4006

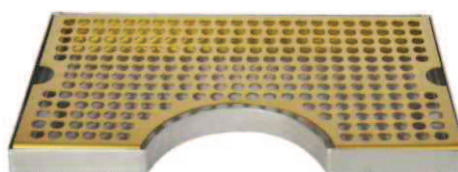
SURFACE DRIP TRAYS WITHOUT DRAIN

Part No.	C606	C607	C611	C626	C632	C641	C642
Size (LxW)	12"x5"	14"x6"	6"x5"	12"x8"	12"x6"	12"x7"	12"x7"
Type	No Drain	No Drain	No Drain	No Drain	No Drain	No Drain	No Drain
Material	Stainless Steel 304	Stainless Steel 304	Stainless Steel 304	Stainless Steel 304	Stainless Steel 304	Stainless Steel 304	Stainless Steel 304
Finish	Brushed	Brushed	Brushed	Brushed	Brushed	PVD Vibrant Gold	Brushed

Part No.	C817	C4000	C4001	C4006	C4010	C4027
Size (LxW)	12"x5"	5.7" x 4.6"	9.5" x 5.6"	12" x 7"	24" X 9"	24" x 7"
Type	No Drain	No Drain	No Drain	No Drain	No Drain	With Drain
Material	Stainless Steel 304	Stainless Steel 304	Stainless Steel 304	Stainless Steel 304	Stainless Steel 304	Stainless Steel 304
Finish	PVD Vibrant Gold	Brushed	Brushed	Brushed Copper	SS Polished	PVD Vibrant Gold



C604



C634



CUT-OUT SURFACE DRIP TRAY

Part No.	C604	C605	C633	C634
Size (LxW)	12"x7"	12"x7"	12"x7"	12"x7"
Type	No Drain	With Drain	No Drain	With Drain
Material	Stainless Steel 304	Stainless Steel 304	Stainless Steel 304	Stainless Steel 304
Finish	Brushed	Brushed	PVD Vibrant Gold	PVD Vibrant Gold

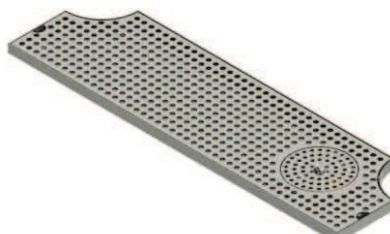
Part No.	C4014	C4015	C4024	C4026
Size (LxW)	14"x8"	14"x8"	24"x8"	24"x12"
Type	No Drain	With Drain	With Drain	With Drain
Material	Stainless Steel 304	Stainless Steel 304	Stainless Steel 304	Stainless Steel 304
Finish	Brushed	PVD Vibrant Gold	Brushed	Brushed

Features

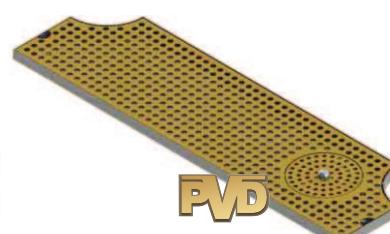
- Solid 1.2mm Stainless steel 304 construction.
- With drain drip tray includes drain assembly C958.



C4025



C4028



C4029

CUT-OUT SURFACE DRIP TRAYS WITH RINSER

Part No.	C4025	C4028	C4029	C4034	C4035	C4040
Size (LxW)	24" X 8"	28" X 8"	28" X 8"	34" X 8"	34" X 8"	40" X 8"
Type	With Drain	With Drain	With Drain	With Drain	With Drain	With Drain
Material	Stainless Steel 304	Stainless Steel 304	Stainless Steel 304	Stainless Steel 304	Stainless Steel 304	Stainless Steel 304
Finish	Brushed	Brushed	PVD Vibrant Gold	Brushed	PVD Vibrant Gold	Brushed

Part No.	C4041	C4046	C4047	C4052	C4053
Size (LxW)	40"x8"	46"x8"	46"x8"	52"x8"	52"x8"
Type	With Drain	With Drain	With Drain	With Drain	With Drain
Material	Stainless Steel 304	Stainless Steel 304	Stainless Steel 304	Stainless Steel 304	Stainless Steel 304
Finish	PVD Vibrant Gold	Brushed	PVD Vibrant Gold	Brushed	PVD Vibrant Gold



C4048

SURFACE TRAYS

Part No.	C4048	C4626
Size (LxW)	16" x 5"	18" x 8"
Type	No Drain	No Drain
Material	Stainless Steel 304	Stainless Steel 304
Finish	Brushed	Brushed



C4626



C628

BEVELED EDGE DRIP TRAYS

Part No.	C628	C629
Size (LxW)	9" x 6.5"	16" X 6.5"
Type	With Drain	With Drain
Material	Stainless Steel 304	Stainless Steel 304
Finish	Brushed	Brushed



C629



C640

JOCKEY BOX DRAINS

Part No.	C640	C824
Size (LxW)	12" x 6"	24" x 5"
Type	With Drain	With Drain
Material	Stainless Steel 304	Stainless Steel 304
Finish	Brushed	Brushed



C781

SS ROUND TRAY

Part No.	C781
Size (LxW)	
Type	No Drain
Material	Stainless Steel 304
Finish	Brushed



C808



C4004



C4005

PLASTIC DRIP TRAYS

Part No.	C808	C4004	C4005
Size (LxW)	12" x 6.5"	10" x 6"	12" x 7"
Type	No Drain	No Drain	No Drain
Material	Food Grade Polycarbonate	Food Grade Polycarbonate	Food Grade Polycarbonate
Finish	Black	Black	Black



C138



C4123



C4165

SHANK MOUNTED DRIP TRAY WITH HOLE

Part No.	C138	C4121	C4122	C4082	C4123	C4164	C4165
Size (LxHxW)	14"x8"	12"x14"x6"	12"x14"x6"	8"x14"x6"	12"x14"x6"	16"x14"x6"	16"x14"x6"
Type	With Drain	With Drain	With Drain	With Drain	With Drain	With Drain	With Drain
Material	Stainless Steel 304	Stainless Steel 304	Stainless Steel 304	Stainless Steel 304	Stainless Steel 304	Stainless Steel 304	Stainless Steel 304
Finish	Brushed	Brushed	Brushed	Brushed	Brushed	Brushed	Brushed
Shank Holes	1	1	2	2	3	4	5

Part No.	C4166	C4168	C4170	C4172	C4174	C4176
Size (LxHxW)	24"x6"x14"	24"x6"x14"	36"x6"x14"	36"x6"x14"	48"x6"x14"	48"x6"x14"
Type	With Drain	With Drain	With Drain	With Drain	With Drain	With Drain
Material	Stainless Steel 304	Stainless Steel 304	Stainless Steel 304	Stainless Steel 304	Stainless Steel 304	Stainless Steel 304
Finish	Brushed	Brushed	Brushed	Brushed	Brushed	Brushed
Shank Holes	6	8	10	12	14	16



C4080



C4120



C4160

SHANK MOUNTED DRIP TRAY WITHOUT HOLE

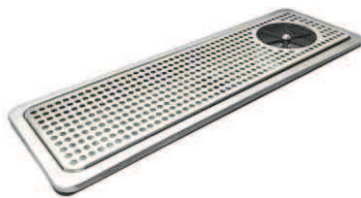
Part No.	C4080	C4120	C4160
Size (LxHxW)	8"x14"x6"	12"x14"x6"	16"x14"x6"
Type	With Drain	With Drain	With Drain
Material	Stainless Steel 304	Stainless Steel 304	Stainless Steel 304
Finish	Brushed	Brushed	Brushed

NEW

C4182
UNDER BAR BEER DRIP TRAY WITH DRAIN NSF

Part No.	C4182	C4183	C4184	C4185
Size (LxD)	12"x4"	18"x4"	24"x4"	30"x4"
Type	With Drain	With Drain	With Drain	With Drain
Material	Stainless Steel 304	Stainless Steel 304	Stainless Steel 304	Stainless Steel 304
Finish	Vibrant Steel	Vibrant Steel	Vibrant Steel	Vibrant Steel

Part No.	C4186	C4187	C4188
Size (LxD)	36"x4"	42"x4"	48"x4"
Type	With Drain	With Drain	With Drain
Material	Stainless Steel 304	Stainless Steel 304	Stainless Steel 304
Finish	Vibrant Steel	Vibrant Steel	Vibrant Steel

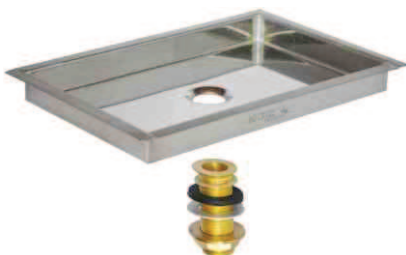

C4031
RECESSED DRIP TRAYS

Part No.	C4031	C064
Size (LxW)	25" x 8.50"	8" x 7"
Type	With Drain	No Drain
Material	Stainless Steel 304	Stainless Steel 304
Finish	Brushed	Brushed


C064

C139
FLUSH MOUNTED DRIP TRAYS

Part No.	C139	C4007
Size (LxW)	12"x5"	16"x7"
Type	With Drain	With Drain
Material	Stainless Steel 304	Stainless Steel 304
Finish	Brushed	Brushed


C4007

C622
FLANGED MOUNT DRIP TRAYS

This stainless steel drip tray mounts right into your counter top and looks great! the drain hole is right in the center of the tray and a drain fitting is included. All you need to do is attach a piece of hose to it and run the tubing to your drain. Your counter top must be cut to tray dimensions given for proper mounting. Comes without plastic grate.

Part No.	C622	C623
Size (LxWxD)	8-1/8"x5-3/8"x3/4"	14-1/8"x5-3/8"x3/4"
Type	With Drain	With Drain
Material	Stainless Steel 304	Stainless Steel 304
Finish	Brushed	Brushed
Drain Size	1/2" BSP	1/2" BSP
Drain Material	Brass	Brass



CENTER SPRAY GLASS RINSER DRIP TRAY

Part No.	C4061
Size (LxW)	7" x 7"
Type	With Drain
Material	Stainless Steel 304
Finish	Brushed



C360

GLASS RINSER DRIP TRAY

Part No.	C360	C4060
Size (LxW)	11-3/8" x 6-3/8"	6-3/8" x 6-3/8"
Type	With Drain	With Drain
Material	Stainless Steel 304	Stainless Steel 304
Finish	Vibrant Steel	Vibrant Steel



C4060



C464

8" X 8" CENTER SPRAY GLASS RINSER DRIP TRAY

Part No.	C464	C464.SS
Size (LxW)	8.5" x 7.5"	8.5" x 7.5"
Type	With Drain	With Drain
Material	Stainless Steel 304	Stainless Steel 304
Disc Material	Plastic	Stainless Steel
Finish	Brushed Stainless	Brushed Stainless



C465

10" X 7" CENTER SPRAY GLASS RINSER DRIP TRAY

Part No.	C465	C465.SS
Size (LxW)	10" x 7"	10" x 7"
Type	With Drain	With Drain
Material	Stainless Steel 304	Stainless Steel 304
Disc Material	Plastic	Stainless Steel
Finish	Brushed Stainless	Brushed Stainless



C466

15" X 7" CENTER SPRAY GLASS RINSER DRIP TRAY

Part No.	C466	C466.SS
Size (LxW)	15" x 7"	15" x 7"
Type	With Drain	With Drain
Material	Stainless Steel 304	Stainless Steel 304
Disc Material	Plastic	Stainless Steel
Finish	Brushed Stainless	Brushed Stainless



C848

16" X 7" GLASS RINSER DRIP TRAY

Part No.	C848
Size (LxW)	16" x 7"
Type	With Drain
Material	Stainless Steel 304
Finish	Brushed Stainless



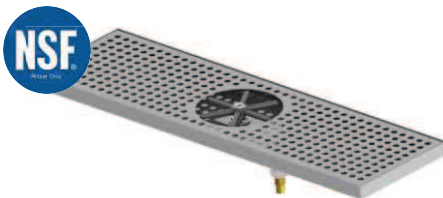
C4008

16" X 7" CENTER SPRAY PITCHER RINSER DRIP TRAY

Part No.	C4008	C4009
Size (LxW)	16" x 7"	16" x 7"
Type	With Drain	With Drain
Material	Stainless Steel 304	Stainless Steel 304
Finish	Brushed Stainless	SS Polished



C4009



C464

24" X 7" CENTER SPRAY GLASS RINSER DRIP TRAY

Part No.	C4003	C4003.SS
Size (LxW)	24" x 7"	24" x 7"
Type	With Drain	With Drain
Material	Stainless Steel 304	Stainless Steel 304
Disc Material	Plastic	Stainless Steel
Finish	Brushed Stainless	Brushed Stainless



C465

45" X 7" TRIPLE RINSER DRIP TRAY

Part No.	C4012	C4012.SS
Size (LxW)	45" x 7"	45" x 7"
Type	With Drain	With Drain
Material	Stainless Steel 304	Stainless Steel 304
Disc Material	Plastic	Stainless Steel
Finish	Brushed Stainless	Brushed Stainless



C848

20" X 7" SIDE SPRAY GLASS RINSER RECESSED DRIP TRAY

Part No.	C4220
Size (LxW)	20" x 7"
Type	With Drain
Material	Stainless Steel 304
Finish	Brushed Stainless



C359

SIDE SPRAY GLASS RINSER DRIP TRAY WITH PLASTIC DISK

Part No.	C359	C460	C461
Size (LxW)	20" x 7"	24" x 7"	30" x 7"
Type	With Drain	With Drain	With Drain
Material	Stainless Steel 304	Stainless Steel 304	Stainless Steel 304
Finish	Brushed Stainless	SS Polished	SS Polished

Part No.	C462	C463
Size (LxW)	36" x 7"	45" x 7"
Type	With Drain	With Drain
Material	Stainless Steel 304	Stainless Steel 304
Finish	Brushed Stainless	SS Polished



C359.SS

SIDE SPRAY GLASS RINSER DRIP TRAY WITH SS DISK

Part No.	C359.SS	C460.SS	C461.SS
Size (LxW)	20" x 7"	24" x 7"	30" x 7"
Type	With Drain	With Drain	With Drain
Material	Stainless Steel 304	Stainless Steel 304	Stainless Steel 304
Finish	Brushed Stainless	SS Polished	SS Polished

Part No.	C462.SS	C463.SS
Size (LxW)	36" x 7"	45" x 7"
Type	With Drain	With Drain
Material	Stainless Steel 304	Stainless Steel 304
Finish	Brushed Stainless	SS Polished



C465

45" X 7" DOUBLE SIDE SPRAY RINSER DRIP TRAY

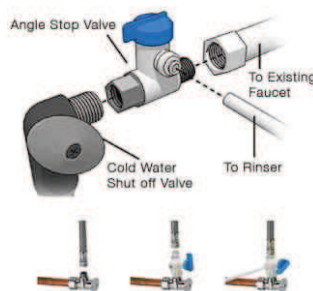
Part No.	C639	C639.SS
Size (LxW)	45" x 7"	45" x 7"
Type	With Drain	With Drain
Material	Stainless Steel 304	Stainless Steel 304
Disc Material	Plastic	Stainless Steel
Finish	Brushed Stainless	Brushed Stainless



C2175

ANGLE STOP VALVE

Part No.	C2175
Male Thread	3/8"
Female Thread	3/8"
OD Tube	3/8"



C990

IN-LINE WATER PRESSURE REGULATOR

Part No.	C990	C990-With Quick Connectors
Pressure	Pre-set at 15 PSI	Pre-set at 15 PSI
Material	Plastic	Plastic
Finish	Chrome Plated	Chrome Plated
Inlet Water Pressure	150 PSI Max	150 PSI Max
Operating Temperature	33° to 120°F	33° to 120°F



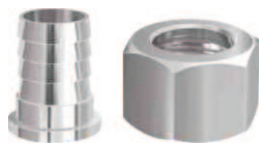
C990-QC



C5545

QUICK CONNECTION FITTING FOR FLOWJET PRESSURE REGULATOR

Part No.	C5545
Size	3/8"
Material	Brass
Finish	Chrome Plated Brass



C610

STANDARD DRAIN NIPPLE & NUT

Suitable for Drip Trays with Drain (C622, C623 and C139)

Part No.	C610
Thread	1/2"-14 BSP
Material	Brass
Finish	Chrome Plated



C958

STANDARD DRAIN ASSEMBLY

For use with most beer drip trays with drain.

Code	C958	C959	C141
Length	3-1/2"	6"	8"
Thread	5/8"-18	5/8"-18	5/8"-18
Material	Brass	Brass	Brass

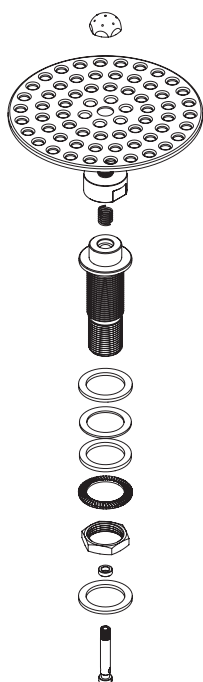


C953

DRAIN ASSEMBLY

Replacement for any drip tray.
Complete with locknut and Washer.

Part No.	C953	C954	C955
Length	1"	2"	4"
Thread	1/2" NPT	1/2" NPT	1/2" NPT
Material	Brass	Brass	Brass



C360.50



C360.50



C4029.50

GLASS RINSER SPRAY ASSEMBLY

Part No.	C360.50	C4028.50	C4029.50
Thread Size	1/2" BSP (External)	1/2" BSP (External)	1/2" BSP (External)
Material	Stainless Steel 304	Stainless Steel 304	Stainless Steel 304
Finish	Brushed	Brushed	Vibrant Gold Finish
Diameter	4.6"	4-5/8"	6-3/8"

Part No.	C4051
Thread Size	1/2" BSP (External)
Material	Stainless Steel 304
Finish	Brushed
Diameter	3-3/4"



C360.03

KROME GLASS RINSER REPLACEMENT DISK ONLY

Part No.	C360.03
Material	Stainless Steel 304
Finish	Brushed



C360.06x1

GLASS RINSER CAP

Part No.	C360.06x1
Material	Brass
Finish	Chrome Plated



C334.04



C4016

REPLACEMENT RINSER DISK

Part No.	C334.04	C4016
Material	ABS	Stainless Steel
Colour	Black	Black



C4013

PITCHER RINSER SPRAY ASSEMBLY WITH STAINLESS STEEL DISK

Part No.	C4013
Material	Stainless Steel



C334.13

PITCHER RINSER SPRAY ASSEMBLY

Part No.	C334.13
Material	Brass
Body Thread	1/2" x 14 BSP



C4135

REPLACEMENT RUBBER BOOTS FOR KROME DISPENSE STAINLESS RINSER DISK

Part No.	C4135
Material	Rubber



**C029****PP PIPE ASSEMBLY**

Part No.	C029
Material	Plastic
Width	5 Feet
Connector	3/8"x1/2" BSP

**C360.07****GLASS RINSER CAP HOLDER**

Part No.	C360.07
Material	Lead free Brass
Male Thread	M10x1
Female Thread	M6x1

**C4011****GLASS RINSER SPRAY ASSEMBLY WITHOUT PUNCHED PLATE**

Part No.	C4011
Barb	5/16"
Thread Size	5/8"x14 BSP
Length	5"

**C360.45.75****GLASS RINSER DRIP TRAY REPAIR KIT**

Part No.	C360.45.75
It is used for Repairing Glass Rinsers Drip Tray :	
	C360.50
	C4028.50
	C4029.50