



C101

C102



C103



C285x100



C115

BRASS TAILPIECE

Part No.	C101	C102	C103	C104	C105
Tube ID	3/16"	1/4"	5/16"	3/8"	1/2"
Material	Brass	Brass	Brass	Brass	Brass
Finish	Chrome Plated	Chrome Plated	Chrome Plated	Chrome Plated	Chrome Plated

Part No.	C101x100	C102x100	C103x100	C104x100	C105x100
Tube ID	3/16"	1/4"	5/16"	3/8"	1/2"
Material	Brass	Brass	Brass	Brass	Brass
Finish	Chrome Plated	Chrome Plated	Chrome Plated	Chrome Plated	Chrome Plated

STAINLESS TAILPIECE

Part No.	C240	C246	C285	C286	C287
Tube ID	3/16"	1/4"	5/16"	3/8"	1/2"
Material	Stainless Steel 304	Stainless Steel 304	Stainless Steel 304	Stainless Steel 304	Stainless Steel 304

Part No.	C441	C442	C441x100	C442x100	C115
Tube ID	3/16"	1/4"	3/16"	1/4"	1/4" MFL
Material	Stainless Steel 316	Stainless Steel 316	Stainless Steel 316 Pack of 100	Stainless Steel 316 Pack of 100	Stainless Steel 304

Part No.	C240x100	C246x100	C285x100	C286x100	C287x100
Tube ID	3/16"	1/4"	5/16"	3/8"	1/2"
Material	Stainless Steel 304 Pack of 100	Stainless Steel 304 Pack of 100	Stainless Steel 304 Pack of 100	Stainless Steel 304 Pack of 100	Stainless Steel 304 Pack of 100



C233

TAILPIECE FOR EUROPEAN FAUCET SHANK

Part No.	C233
Material	Stainless Steel 304
Internal Hose Diameter	0.4" ID



C436

CROSS TEE'S & SPLICERS

Part No.	C436	C437	C438
Material	Stainless Steel 304	Stainless Steel 304	Stainless Steel 304
Tube ID	3/16"	1/4"	5/16"


C134

C5538

C5561

BRASS TAILPIECE

Part No.	C134	C434	C5537	C5561
Material	Stainless Steel 304	Stainless Steel 304	Stainless Steel 304	Brass
Bore ID	3/16"	1/4"	3/8"	5/16"

Part No.	C5538	C5551
Material	Plastic	Plastic
Bore ID	3/8"	1/4"


C401

C405

C909

SPLICERS

Part No.	C401	C402	C405	C409
Material	Stainless Steel 304	Stainless Steel 304	Stainless Steel 304	Stainless Steel 304
Splicer ID	3/16"x3/16"	3/16"x1/4"	1/4"x1/4"	3/8"x1/4"

Part No.	C415	C904	C905	C906
Material	Stainless Steel 304	Stainless Steel 304	Stainless Steel 304	Stainless Steel 304
Splicer ID	3/8"x3/8"	3/16"x5/16"	3/16"x3/8"	1/4"x5/16"

Part No.	C907	C908	C909	C924
Material	Stainless Steel 304	Stainless Steel 304	Stainless Steel 304	Stainless Steel 304
Splicer ID	5/16"x5/16"	5/16"x3/8"	3/8"x1/2"	1/2"x1/2"


C172

ELBOW NIPPLE

Part No.	C172	C603	C621	C661
ID	1/4"	3/16"	3/16"	1/4"
Material	Brass	Brass	Stainless Steel 304	Stainless Steel 304
Finish	SS Polished	Chrome Plated	SS Polished	SS Polished


C172

ELBOW FOR EUROPEAN FAUCET SHANKS

Part No.	C813
Tube ID	0.28"
Material	Brass
Finish	Stainless Steel 304



C706

SWIVEL 90 DEGREE ELBOW FOR KEG COUPLER

Part No.	C706
Material	Stainless Steel 304
Internal Thread Size	5/8"

Features

- Self-sealing with built in O-ring.
- Fits standard Keg coupler probes.



C114

STAINLESS STEEL ELBOW

Part No.	C114	C135	C645
ID	1/4"x1/4"	3/16" X 3/16"	1/4" x 3/8"
Material	Stainless Steel 304	Stainless Steel 304	Stainless Steel 304

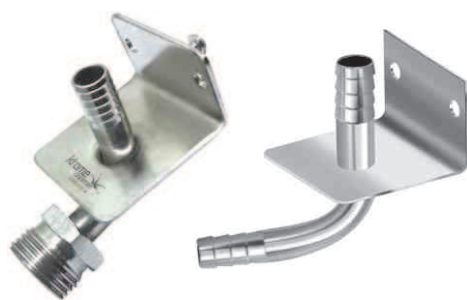


C251

C252

U BEND

Part No.	C251	C252
Type	Large	Small
Outer Diameter	3/8"	3/8"
Size (LxW)	3"x2-5/8"	2"x1-13/16"
Fits	5/16" ID vinyl to 5/16" ID vinyl	5/16" ID vinyl to 5/16" ID vinyl
Material	Stainless Steel 304	Stainless Steel 304



C365

C398

WALL BRACKETS

Part No.	C365	C398
Barb	3/8"	3/8"x3/8"
Thread Size	5/8" BSP	-
Material	Stainless Steel 304	Stainless Steel 304

Features

- Wall Bracket 304 grade stainless steel 3/8" bore.
- Thread 7/8"-14 (5/8" BSP)
- Keeps beer lines organized and steady.


C498

WALL BRACKET BARB STRAIGHT

Part No.	C498
Barb	3/8"x3/8"
Material	Stainless Steel 304


C137

BEER "Y" FITTING

Easily dispense at two faucets from one keg. Simply connect on the beer connection of any keg coupler.

Part No.	C137	C599
Bore ID	3/8"	3/8"
Height	2-1/2"	2-1/2"
Thread	5/8" BSP	5/8" BSP
Material	Plated Brass	Stainless Steel 304


C158

C152

WALL BRACKETS

Part No.	C158	C152
Bore ID	3/8"	3/8"
Thread	5/8" BSP	5/8" BSP
Material	Stainless Steel 304	Stainless Steel 304


C525

MALE HOSE STEM

Part No.	C525	C526
Material	Brass	Brass
Finish	Chrome Plated	Chrome Plated
Barb	5/16"	3/16"
Thread Size	1/4" x 19 NPT	1/4" MPT



C5534

WALL BRACKET MOUNT U BEND MANIFOLD

Part No.	C5534
Material	Stainless Steel 304

Features

- Wall Mount U manifold to arrange and stabilize Beer dispensing.
- Includes Wall Bracket Fittings to mount.



C663

KEG COUPLER ELBOW WITH FEMALE THREADS ON BOTH SIDES

Part No.	C663
Material	Stainless Steel 304
Finish	Brushed
Thread Size	7/8"-14 (5/8" BSP) (SmxSm)



C733x1

C733x100

ECONOMY BEER NUT

Part No.	C733x1	C733x100
Material	Brass	Brass
Finish	Chrome Plated Brass	Chrome Plated Brass
Thread Size	5/8" x 14 BSP	5/8" x 14 BSP
		Pack of 100



C181x1

C181x50

HEX BEER NUTS

Part No.	C181x1	C181x50
Type	Hex Nut	Hex Nut
Material	Brass	Brass
Finish	Chrome Plated	Chrome Plated
Thread Size	Standard US Beer Nut thread (5/8" BSP)	Standard US Beer Nut thread (5/8" BSP)
		Pack of 50



C5536

Part No.	C5536
Type	Hex Nut
Material	Stainless Steel
Thread Size	5/8"X14 BSP



C193x1



C193x25

CONNECTING HEX NIPPLE

Part No.	C193x1	C193x25
Type	Wing Nut	Wing Nut
Material	Brass	Brass
Finish	Chrome Plated	Chrome Plated
Thread Size	(5/8" BSP)	(5/8" BSP)
		Pack of 25



C428

HEX ADAPTER

Part No.	C3162
Thread Size	5/8" X 14 BSP
Material	Stainless Steel 304

Features

- Wall Mount U manifold to arrange and stabilize Beer dispensing.
- Includes Wall Bracket Fittings to mount.



C428

CONNECTING HEX NIPPLE

Part No.	C428
Bore	10mm
Material	Stainless Steel 304

Features

- Wall Mount U manifold to arrange and stabilize Beer dispensing.
- Includes Wall Bracket Fittings to mount.



C181x1

WORM CLAMP

Part No.	C225x1	C235x1
ID	3/16" to 5/16	7/16" to 5/8"
Material	Stainless Steel 304	Stainless Steel 304

Part No.	C225x100	C235x100
ID	3/16" to 5/16	7/16" to 5/8"
Material	Stainless Steel 304 Pack of 100	Stainless Steel 304 Pack of 100



STEP LESS CLAMP

Part No.	C140	C188	C189
Size	11.90mm	14.80mm	16.80mm
Material	Stainless Steel 304	Stainless Steel 304	Stainless Steel 304
Vinyl Hose ID	3/16"	1/4"	3/8"

Part No.	C020	C021	C022
Size	10.5mm	13.30mm	17.00mm
Material	Stainless Steel 304	Stainless Steel 304	Stainless Steel 304
Vinyl Hose ID	1/4"	5/16"	5/16"

Part No.	C027	C021x100	C022x100
Size	10.00mm	13.30mm	17.00mm
Material	Stainless Steel 304	Stainless Steel 304	Stainless Steel 304
Vinyl Hose ID	1/4"	5/16" Pack of 100	5/16" Pack of 100



C070

PYTHON CLAMP

Part No.	C070
Material	Plastic
Colour	Black
Width	1.50"



C088

STRAIGHT CONNECTORS

Part No.	C088	C089	C5543
Finish	Raw	Raw	Raw
Size	3/8" Equal Straight	1/2" Equal Straight	5/16" Equal Straight
Material	PE High Density	PE High Density	PE High Density

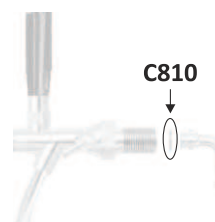


C810

SILICON WASHER

For Flow Control Tap.

Part No.	C810
Material	Silicon





C5544

JG FITTING TUBE TO HOSE STEM

Part No.	C5544
Material	Plastic
ID	3/16" Hose
OD	1/4" Stem



C095

BEER ELBOW PUSH TYPE CONNECTION FOR PP TUBING

Part No.	C095
Material	Food Grade
Size	5/8" BSP X 3/8" Push In



C028

INLINE SHUTOFF VALVE

Part No.	C028
Size	3/8"
Material	Plastic



C092

JOHN GUEST EQUAL T INLET

Part No.	C092
ID	3/8"
Material	Food Safe Plastic



C2125x20

PP TUBING FOR BEVERAGES FOOD SAFE

Part No.	C2125	C2125x20	C2123
Material	PP Copolymer	PP Copolymer	PP Copolymer
ID	1/4"	1/4"	3/16"
OD	3/8"	3/8"	7/16"
Color	Translucent	Translucent	Translucent
Size	Per Feet	20 Feet	20 Feet

Features

- Polypropylene material tubing can be used for multiple applications.
- FDA approved food grade. Safe for liquid contact.
- Resistant to chemicals, low surface friction and dimensional stability.



C110

BEER HOSE ASSEMBLY

Part No.	C110	C111
Hex Nut	On One End	On Both Ends
Length	5ft	5ft
Tube ID X OD	3/16"x7/16"	3/16"x7/16"



C2650



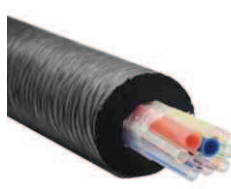
C2651

GLYCOL ONLY TRUNK LINE

Part No.	C2650	C2651
Number of lines	2	4
Diameter	2-3/8"	2-3/8"
Moisture barrier wrap	Food Quality Barrier Film	Food Quality Barrier Film
Barrier jacket	Smooth Vinyl	Smooth Vinyl
Insulation	3/4" (19mm) closed cell	3/4" (19mm) closed cell



C2264



C2267

Part No.	C2264	C2267
Number of lines	6	8
Diameter	2-3/8"	2-3/8"
Moisture barrier wrap	Food Quality Barrier Film	Food Quality Barrier Film
Barrier jacket	Smooth Vinyl	Smooth Vinyl
Insulation	3/4" (19mm) closed cell	3/4" (19mm) closed cell



HOSE VINYL

Part No.	C2114-50	C2114-100	C2128-50	C2128-100
Material	Vinyl	Vinyl	Vinyl	Vinyl
Inner Diameter	1/4"	1/4"	1/2"	1/2"
OD	1/2"	1/2"	3/4"	3/4"
Hose Length	50 Feet Spool	100 Feet Spool	50 Feet Spool	100 Feet Spool

Part No.	C2129-50	C2129-100	C2130-50	C2130-100
Material	Vinyl	Vinyl	Vinyl	Vinyl
Inner Diameter	3/8"	3/8"	5/16"	5/16"
OD	5/8"	5/8"	9/16"	9/16"
Hose Length	50 Feet Spool	100 Feet Spool	50 Feet Spool	100 Feet Spool

Part No.	C2130-500
Material	Vinyl
Inner Diameter	5/16"
OD	9/16"
Hose Length	500 Feet Spool



COLOURED HOSE VINYL

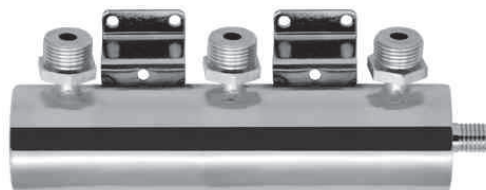
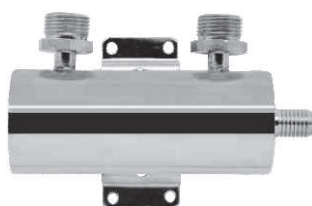
Part No.	C2121-4	C2121-50	C2121-100	C2121-500
Material	Vinyl	Vinyl	Vinyl	Vinyl
Inner Diameter	5/16"	5/16"	5/16"	5/16"
OD	9/16"	9/16"	9/16"	9/16"
Hose Length	4 Feet	50 Feet Spool	100 Feet Spool	500 Feet Spool
Color	Red	Red	Red	Red

Part No.	C2122	C2129-100	C2130-50	C2130-100
Material	Vinyl	Vinyl	Vinyl	Vinyl
Inner Diameter	5/16"	3/8"	5/16"	5/16"
OD	9/16"	5/8"	9/16"	9/16"
Hose Length	Sold Per Foot	100 Feet Spool	50 Feet Spool	100 Feet Spool
Color	Blue			



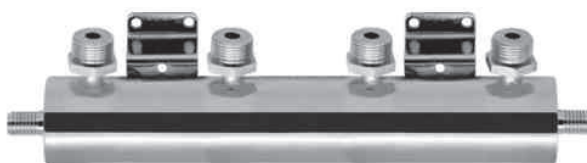
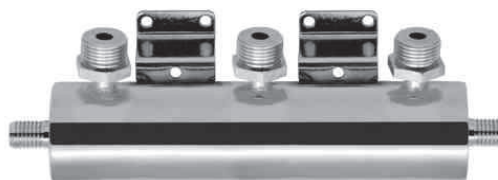
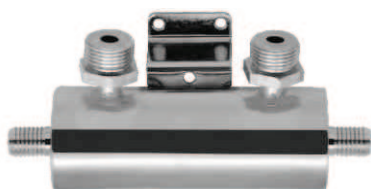
BRAIDED VINYL HOSE

Part No.	C2117	C2117-50	C2121-100
Material	Vinyl	Vinyl	Vinyl
Inner Diameter	3/8"	3/8"	5/16"
OD	5/8"	5/8"	9/16"
Hose Length	1 Feet	50 Feet	100 Feet Spool
			Red



BEER MANIFOLD – ONE BARB END

Part No.	C832	C833	C834
Material	Stainless Steel 304	Stainless Steel 304	Stainless Steel 304
Finish	SS Polished	SS Polished	Brushed
Performance	2 stations	3 stations	4 stations
Mounting Bracket	Welded	Welded	Welded
Inlet Connection	1/2" O.D	1/2" O.D	1/2" O.D
Outlet Connection	7/8" - 14 (5/8" BSP)	7/8" - 14 (5/8" BSP)	7/8" - 14 (5/8" BSP)
Thread Size	5/8" x 14 BSP	5/8" x 14 BSP	5/8" X 14 BSP
Color	Silver	Silver	Silver
Mounting System	Wall Mount	Wall Mount	Wall Mount



BEER MANIFOLD - TWO BARB END

Part No.	C835	C836	C837
Material	Stainless Steel 304	Stainless Steel 304	Stainless Steel 304
Finish	Brushed	Brushed	SS Polished
Performance	2 stations	3 stations	4 stations
Mounting Bracket	Welded	Welded	Welded
Inlet Connection	(2) 1/2" O.D	(2) 1/2" O.D	(2) 1/2" O.D
Outlet Connection	7/8" -14(5/8" BSP)	7/8" -14(5/8" BSP)	7/8" -14(5/8" BSP)
Thread Size	5/8" x 14 BSP	5/8" x 14 BSP	5/8" X 14 BSP
Color	Silver	Silver	Silver
Mounting System	Wall Mount	Wall Mount	Wall Mount



4 KEGS, SECONDARY PANEL WITH MANIFOLD

Part No.	C5717
Performance	4 Pressures / 4 Kegs
Red Hose	8' of 5/16"
PVC Vinyl Hose Size	7' of 1/2" X 3/4"
Weight	16.50Lbs

Features

- Regulators, beer and air hoses for kegs, all on one easy mount panel.
- Stainless steel inlet filter.
- Pre-taped pipe plug and two hose barbs included
- Stainless steel inlet filter



SECONDARY REGULATOR PANEL KIT WITH AIR DISTRIBUTOR

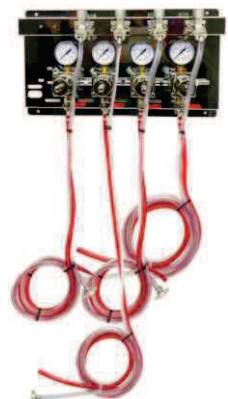
Part No.	C5716	C5718
No. of Kegs	2	3
Pressure	0-60 PSI, for accurate keg pressure	0-60 PSI, for accurate keg pressure
Performance	Single Pressure / 2 Kegs	Single Pressure / 3 Kegs
Barb	3/8" O.D. (Both Sides)	3/8" O.D. (Both Sides)
Insulation	Wall mount panel, pre-drilled holes	Wall mount panel, pre-drilled holes
Red Hose	8' of 5/16" I.D. Red Vinyl	8' of 5/16" I.D. Red Vinyl



C5721



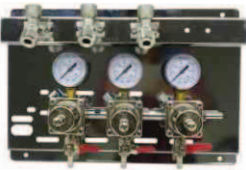
C5722



C5724

SECONDARY REGULATOR PANEL KIT

Part No.	C5721	C5722	C5724
Pressure	0-60 PSI, for accurate keg pressure	0-60 PSI, for accurate keg pressure	0-60 PSI, for accurate keg pressure
Performance	1 Pressure / 1 Kegs	2 Pressures / 2 Kegs	4 Pressures / 4 Kegs
Barb	3/8" O.D. with shut-off	3/8" O.D. (Both Sides)	3/8" O.D. with shut-off
Insulation	Wall mount panel, pre-drilled holes	Wall mount panel, pre-drilled holes	Wall mount panel, pre-drilled holes
Red Hose	8' of 5/16" I.D. Red Vinyl	8' of 5/16" I.D. Red Vinyl	8' of 5/16" I.D. Red Vinyl



C5703



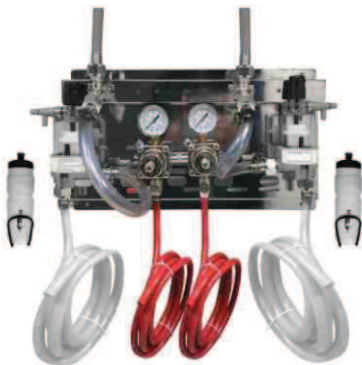
C5704

SECONDARY REGULATOR PANEL

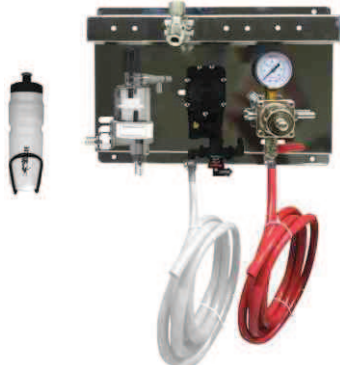
Part No.	C5703	C5704
Pressure	0-60 PSI, for accurate keg pressure	0-60 PSI, for accurate keg pressure
Performance	3 Pressures / 3 Kegs	4 Pressures / 4 Kegs
Barb	3/8" O.D. with shut-off	3/8" O.D. with shut-off
Insulation	Wall mount panel, pre-drilled holes	Wall mount panel, pre-drilled holes
Dimensions	14" wide x 11" tall	14" wide x 11" tall



C5712



C5713



C5714

SECONDARY REGULATOR STANDARD PANEL KIT WITH FOB

Part No.	C5712	C5713	C5714
Outlet	1	2	1
Valve Type	5/16" Barb	5/16" Barb	5/16" Barb
PVC Vinyl Hose Size	7' of 1/2" X 3/4"	7' of 1/2" X 3/4"	7' of 1/2" X 3/4"
Red Hose	8' of 5/16"	8' of 5/16"	8' of 5/16"
Pump	Not Included	Not Included	Included



BEER SYSTEM INSTALLATION KIT FOR 3/8"

Part No. **C4109**

Kit Includes:

- C140 – SS 304 Stepless Clamp – 3/16" (30)
- C188 – SS Stepless Clamp – 5/16" ID Vinyl Hose (30)
- C027 – SS 304 Stepless Clamp – 3/8" (80)
- C398.01 – SS Wall Bracket Elbow 3/8" with Both Side Barb (2)
- C904 – SS Splicer – 1/4" X 3/8" (10)
- C907 – SS Splicer 3/8" X3/8" – Single Piece Pack (8)
- C251 – Large U Bend – 3/8" O.D. X3" Long (4)
- C2124-50 – 3/16" ID Hose Clear Vinyl – 50 Feet Cut Coil (1)
- C2117-50 – 3/8" ID Braided Vinyl Hose – 50' Spool (1)
- C2644 – Glycol System Moisture Strapping Tape (1)
- C2634 – 4" Wide X20 Meter Aluminium Foil Tape 30 Micron (1)
- C2645 – Foam Insulation Tape, 2"X30' (1)
- C036 – Scapa Tape (1)
- C5503-6 – Six Feet Insulation Tube 1/2" ID X1/2" Wall (1)
- C5515-6 – Six Feet 2-1/8" ID X3/4" Wall CXlosed Cell Flexible Foam (1)
- C2261-12 – 12 Feet Python Tubing for 2 Beer Lines (1)

BEER SYSTEM INSTALLATION KIT FOR 1/4"

Part No. **C4110**

Kit Includes:

- C140 – SS 304 Stepless Clamp – 3/16" (30)
- C188 – SS Stepless Clamp – 5/16" ID Vinyl Hose (30)
- C027 – SS 304 Stepless Clamp – 3/8" (80)
- C398.01 – SS Wall Bracket Elbow 3/8" with Both Side Barb (2)
- C907 – SS Splicer 3/8" X3/8" – Single Piece Pack (8)
- C251 – Large U Bend – 3/8" O.D. X3" Long (4)
- C2124-50 – 3/16" ID Hose Clear Vinyl – 50 Feet Cut Coil (1)
- C2117-50 – 3/8" ID Braided Vinyl Hose – 50' Spool (1)
- C2644 – Glycol System Moisture Strapping Tape (1)
- C2634 – 4" Wide X20 Meter Aluminium Foil Tape 30 Micron (1)
- C2645 – Foam Insulation Tape, 2"X30' (1)
- C036 – Scapa Tape (1)
- C5503-6 – Six Feet Insulation Tube 1/2" ID X1/2" Wall (1)
- C5515-6 – Six Feet 2-1/8" ID X3/4" Wall CXlosed Cell Flexible Foam (1)
- C2261-12 – 12 Feet Python Tubing for 2 Beer Lines (1)
- C240 – Tailpiece for 3/16" ID Vinyl Hose – Stainless Steel 304 (10)
- C401 – Stainless Steel 304 Splicer – 1/4" X 1/4" (10)

BEER SYSTEM INSTALLATION KIT FOR 5/16"

Part No. **C4111**

Kit Includes:

- C140 – SS 304 Stepless Clamp – 3/16" (30)
- C188 – SS Stepless Clamp – 5/16" ID Vinyl Hose (30)
- C027 – SS 304 Stepless Clamp – 3/8" (80)
- C398.01 – SS Wall Bracket Elbow 3/8" with Both Side Barb (2)
- C907 – SS Splicer 3/8" X3/8" – Single Piece Pack (8)
- C251 – Large U Bend – 3/8" O.D. X3" Long (4)
- C2124-50 – 3/16" ID Hose Clear Vinyl – 50 Feet Cut Coil (1)
- C2117-50 – 3/8" ID Braided Vinyl Hose – 50' Spool (1)
- C2644 – Glycol System Moisture Strapping Tape (1)
- C2634 – 4" Wide X20 Meter Aluminium Foil Tape 30 Micron (1)
- C2645 – Foam Insulation Tape, 2"X30' (1)
- C036 – Scapa Tape (1)
- C5503-6 – Six Feet Insulation Tube 1/2" ID X1/2" Wall (1)
- C5515-6 – Six Feet 2-1/8" ID X3/4" Wall CXlosed Cell Flexible Foam (1)
- C2261-12 – 12 Feet Python Tubing for 2 Beer Lines (1)
- C021 – SS 304 Stepless Clamp 1/2" (30)
- C102 – Tail Piece for 1/4" ID Vinyl Hose – Chrome Plated Brass (10)
- C402 – SS Splicer – 1/4" X 5/16" (10)



GLYCOL SYSTEM MOISTURE STRAPPING TAPE

Part No. **C2644**
Type Moisture Strap
Width 2"



FOAM INSULATION TAPE

Part No. **C2645**
Type Foam Insulation
Width 2"
Length 30'