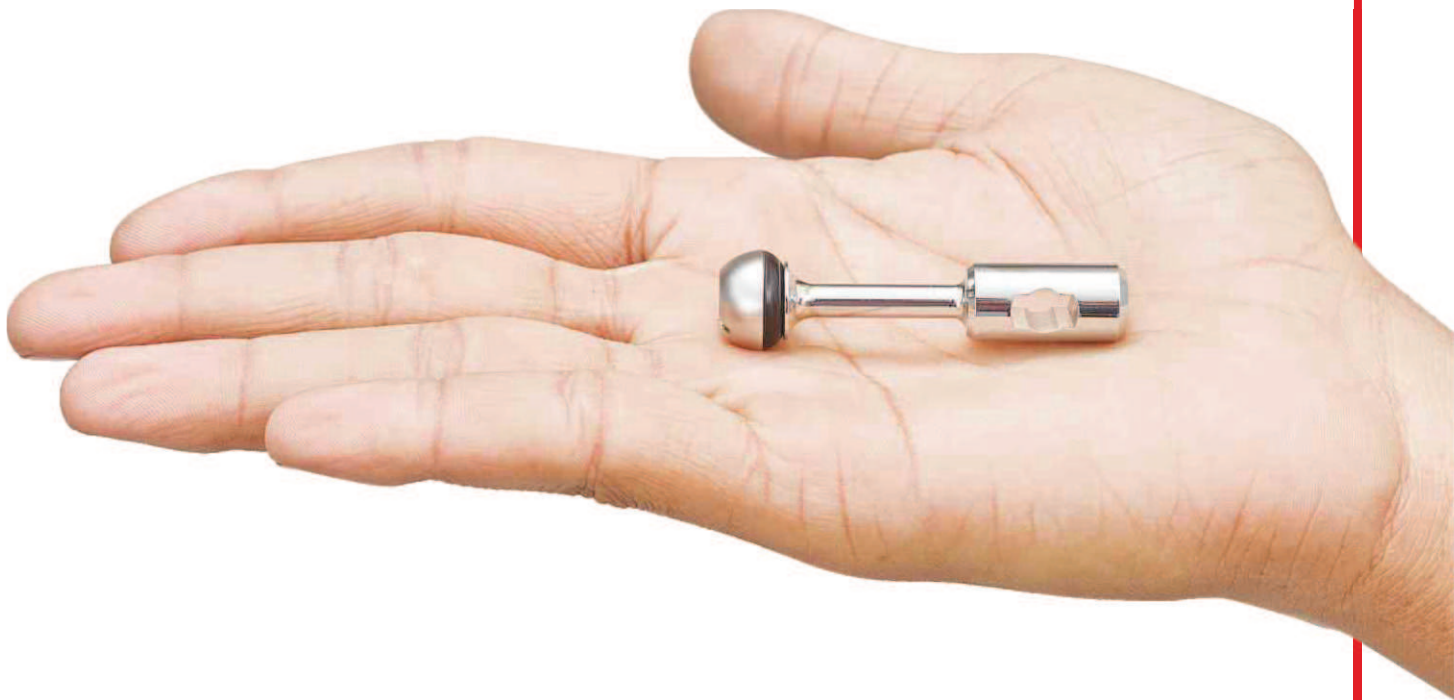


We Know Taps



NEW

C3024
FORWARD
SEALING FAUCET

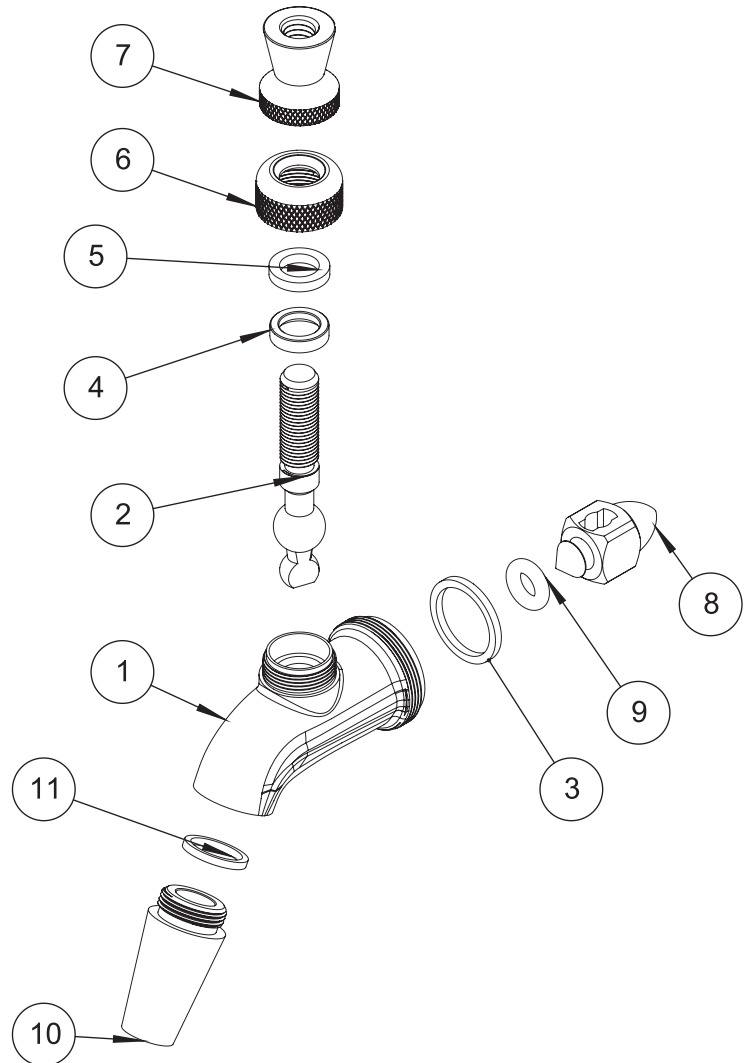
100%
STAINLESS
STEEL

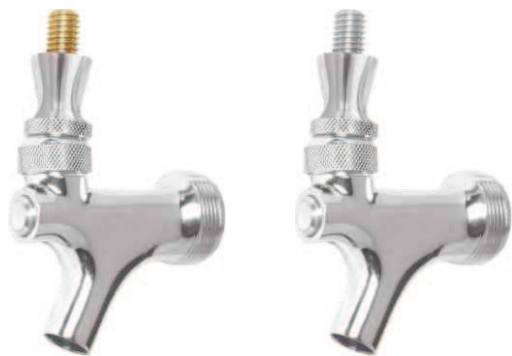


FORWARD SEALING BEER FAUCET

Part No.	C3024	C3023
Faucet Material	Stainless Steel	Stainless Steel
Faucet Finish	Chrome Plated	Chrome Plated
Body Thread	1-1/8 X 18 UNEF	1-1/8 X 18 UNEF
Lever Thread	3/8" X 16 UNC	3/8" X 16 UNC
Flow Control	No	Yes

S.No.	Part Name	Part No.
1	Forward Sealing Faucet	C3024.01
2	US Lever	C230
3	Coupling Gasket	C201.07
4	Teflon Washer	C201.06
5	Lever Friction Rubber Washer	C201.05
6	Bonnet	C201.04
7	Collar Nut	C201.03
8	Intertap Shaft	C3024.02
9	Seat O-Ring fro Intertap	C3024.03
10	Intertap Spout SS	C3024.04
11	Intertap Spout	C3024.04





C201

C203

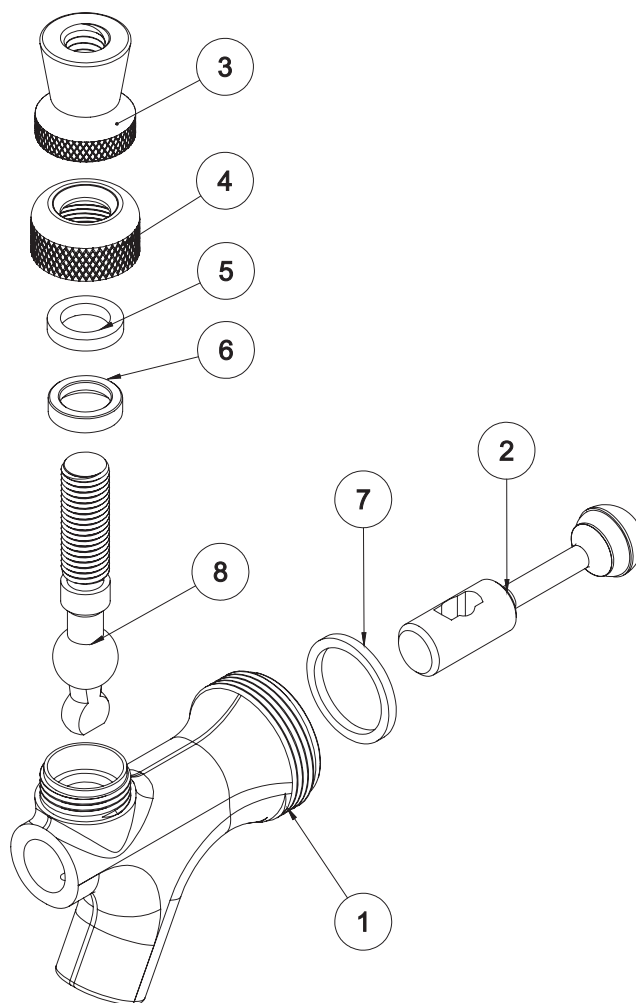
STANDARD BEER FAUCET - US TYPE

Part No.	C201	C202	C203
Faucet Material	Brass	Brass	Stainless Steel 304
Faucet Finish	Chrome Plated	Chrome Plated	SS Polished
Lever Material	Brass	Stainless Steel 304	Stainless Steel 303

(Without Branding)

Part No.	C201.OEM X 50	C203.OEM X 50
Faucet Material	Brass	Stainless Steel 304
Faucet Finish	Chrome Plated	SS Polished
Lever Material	Brass	Stainless Steel 303

S.No.	Part Name	Part No.
1	Standard Tap Body	C201.01
2	US Faucet Shaft Assembly	C201.02
3	Collar Nut	C201.03
4	Bonnet	C201.04
5	Lever Friction Washer	C201.05
6	Teflon Washer	C201.06
7	Coupling Gasket	C201.07
8	Brass US Lever	C245



Refer No. ⑦ in Wire Diagram



C201.07

COUPLING GASKET

Used in all US type Faucets with 60 teeth.

Part No.	C201.07
Material	Rubber
Thickness	2mm
ID	18mm
OD	22mm



BEER FAUCET LEVERS

Part No.	C230	C245
Thread	3/8"x-16 UNC	3/8"x16 UNC
Material	Stainless Steel 304	Brass



PVD BRASS BEER FAUCET - US TYPE

Part No.	C205	C206
Faucet Material	Brass	Brass
Faucet Finish	Vibrant Gold Color	Vibrant Gold Color
Lever Material	Brass	Stainless Steel



100% STAINLESS STEEL BEER FAUCET - US TYPE

Part No.	C008
Faucet Material	Stainless Steel 304
Faucet Finish	SS Polished
Lever Material	Stainless Steel 304



EDGE / BEER FAUCET

Part No.	C362	C459
Faucet Material	Stainless Steel 304	Stainless Steel 304
Faucet Finish	SS Polished	Pvd Vibrant Gold
Lever Material	Stainless Steel 304	Stainless Steel 304





C459

100%SS
304
faucets

Kromedispense



C362



STAINLESS STEEL BEER FAUCET - US TYPE (PVD COATED)

Part No.	C256
Faucet Material	Stainless Steel 304
Faucet Finish	Vibrant Gold Color
Lever Material	Stainless Steel 304

Features

- Vibrant Gold Color Finish never tarnish like brass.



C117



C211

AUTO SHUT MECHANISM BEER FAUCETS - US TYPE

Part No.	C117	C211
Faucet Material	Stainless Steel 304	Brass
Faucet Finish	SS Polished	Chrome Plated
Lever Material	Stainless Steel 304	Brass

Features

- Shuts itself when you release the handle.



C183



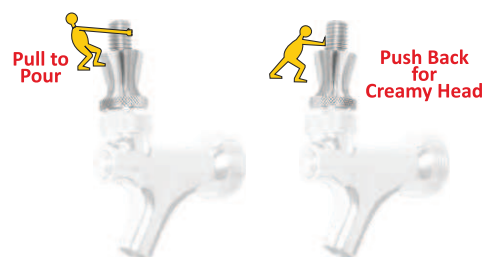
C283

CREAMER ACTION BEER FAUCETS - US TYPE

Part No.	C183	C283
Faucet Material	Brass	Stainless Steel 304
Faucet Finish	Chrome Plated	SS Polished
Lever Material	Brass	Stainless Steel 304

Features

- Pull & Push mechanism pours the foamy & creamy bear in your glass.





PURE . SURE . SS 316

BEER . WINE . CIDER

NEW . ONE . AFFORDABLE .

C361



INTRODUCING THE NEW SLEEK DESIGN “EDGE TAP C361 WITH EXTENDED SPOUT”
from kromedispense Precisely made from stainless steel 316 grade, SS 316 grade is
purest and more corrosion resistant grade than SS 304

'Kromedispense' is Registered Trade name of Pacific Merchants, India



C361

C896

EDGE TAP / WINE FAUCET WITH EXTENDED SPOUT

Part No.	C361	C896
Faucet Material	Stainless Steel 316	Stainless Steel 316
Faucet Finish	SS Polished	PVD Vibrant Gold
Lever Material	Stainless Steel 304	Stainless Steel 304

All Internal Parts are Stainless Steel 316.



C272

C654

FLOW CONTROL FAUCET (RETROFIT ANY US STYLE SHANK)

Part No.	C272	C654
Outlet	10mm	10mm
Faucet Material	Brass	Stainless Steel 304
Faucet Finish	Chrome Plated	Pvd Vibrant Gold
Spout Material	Stainless Steel 304	Stainless Steel 304

Features

- Adjustable Flow Control Spout.
- Longer spout helps to eliminate foam.
- Traditional European style, Faucet Knob Included.
- Spring Loaded Self Closing Faucet Handle.
- Include Creamer Action.



C2496

REPAIR KIT FOR STANDARD US BEER FAUCET WITH SS LEVER

Part No.	C2496
Material	Stainless Steel
Thread Size	3/8" X 16 UNC



C2497

REPAIR KIT FOR STANDARD US BEER FAUCET WITH BRASS LEVER

Part No.	C2497
Material	Brass
Thread Size	3/8" X 16 UNC

FAUCET SPOUT EXTENSIONS



To convert U.S. Faucet spout to European style Faucet Spout.
* Help reduce foam white pouring faster.

Part No.	C226	C227
Spout ID	8mm	8mm
Material	Brass	Stainless Steel 304
Finish	Chrome Plated Brass	SS Polished

Features

- Help reducing foam, Pours faster.
- Snug fits in standard US tap spout.

SPOUT PLUG FOR FAUCETS



Part No.	C182x12	C182x100
Length	1-3/8"	1-3/8"
Colour	Black	Black
Material	Rubber Pack of 12	Rubber Pack of 100

Features

- Fits Standard Beer and Wine Faucets.
- A spout plug is an economical solution for controlling fruit flies, yeast and bacteria build up when the faucet is not in use.

HYGIENE PLUG



Part No.	C545x50	C545x5	C545x600	C545x1200
Total Length	60mm	60mm	60mm	60mm
Brush Wire Material	Stainless Steel 304	Stainless Steel 304	Stainless Steel 304	Stainless Steel 304
Handle Colour Option	 Box of 50	 Pack of 5	 Pack of 600	 Pack of 1200

Features

- Helps keep beer taps clean.
- Protects taps from fruit flies entering them when not in use.
- Has bristles to clean the inside of the faucets.
- Fits almost all beer tap types.



Keep Your Beer Safe & Hygienic



**Stainless
Steel 304
Wire**



Part # C545 Hygiene Plug

Features

- Helps keep beer taps clean.
- Protects taps from fruit flies entering them when not in use.
- Has bristles to clean the inside of the faucets.
- Fits almost all beer tap types.



JUG-GROWLER FILLER

Perfect for filling jugs or growlers with beer. Attaches easily to Standard US tap spout.

Part No.	C708
Length	1 Feet (12")
Material	Brass
Finish	Chrome Plated Brass

Features

- Fill your growlers with ease.
- Allows beer to be filled from the bottom up, generating less foam.
- Easily fits C201, C203 and all other US Standard faucet.



GROWLER FILLER FOR PERLICK FAUCET

Perfect for filling jugs or growlers with beer.

Part No.	C719
Length	1 Feet (12")
Material	Stainless Steel 304

Features

- This filler allows you to fill growlers from the bottom which creates less foam.
- Stainless steel and double o ring seals provide a good tight seal to the inside of the faucet preventing messy leaks.
- SS construction means this will last far longer than chrome plated growler fillers



GROWLER FILLER FOR 630SS & 650SS

Part No.	C764
Length	1 Feet (12")
Material	Stainless Steel 304

Features

- This filler allows you to fill growlers from the bottom which creates less foam.
- Stainless steel and double o ring seals provide a good tight seal to the inside of the faucet preventing messy leaks.
- SS construction means this will last far longer than chrome plated growler fillers



GROWLER FILLER NOZZLE ONLY FOR 630SS & 650SS FAUCET

Part No.	C764.50
Material	Stainless Steel 304
Barb	3/8"

STOP unauthorized pour of beer in Bar, Restaurants and Home

* Cost's only
few pours



WRAP AROUND FAUCET LOCK WITH 2 ALIKE KE

Fits Standard Beer and Wine Faucets.

Part No.	C239
Alike Keys	2 Pcs
Faucet Lock Material	Brass
Faucet Lock Finish	Plated Brass

Features

- Tamper proof and extremely easy to install and remove.
- Krome Dispense beer faucet lock features brass tumbler.
- Hardened steel locking hasp and locks that are keyed alike.
- Limits Beer shrinkage at commercial premises.
- Eliminates underage access to your draft beer setup.



FAUCET LOCK FOR PERLICK TAP

Fits Standard Beer and Wine Faucets.

Part No.	C739
Alike Keys	2 Pcs
Faucet Lock Material	Brass
Faucet Lock Finish	Plated Brass

Features

- Tamper proof and extremely easy to install and remove.
- Krome Dispense beer faucet lock features brass tumbler.
- Hardened steel locking hasp and locks that are keyed alike.
- Limits Beer shrinkage at commercial premises.
- Eliminates underage access to your draft beer setup.





GUINNESS FAUCET LOCK

Make your investment secure - just add padlock to lock your tap.

Part No.	C710
Material	Stainless Steel 304
Finish	SS Polished

This lock will not fit standard ale and lager type faucets.

Features

- Durable and easy to use, this stout faucet lock features 2 o-rings to seal the spout, preventing beer from being poured. Use any standard padlock to secure the lock in place.
- Made from Stainless Steel for durability! Built-in o-rings to seal the spout and prevent beer from being poured.
- Accepts standard padlocks.



LOCKING BRACKET FOR KROME STOUT FAUCET

Make your investment secure - just add padlock to lock your tap.

Part No.	C802
Material	Stainless Steel 304
Finish	SS Polished

This lock will not fit standard ale and lager type faucets.

Features

- Durable and easy to use, this stout faucet lock features 2 o-rings to seal the spout, preventing beer from being poured. Use any standard padlock to secure the lock in place.
- Made from Stainless Steel for durability! Built-in o-rings to seal the spout and prevent beer from being poured.
- Accepts standard padlocks.



PAD LOCK FOR STOUT FAUCET LOCK

Make your investment secure - just add padlock to lock your tap.

Part No.	C3239
Material	Brass

This lock will not fit standard ale and lager type faucets.

Features

- Padlock with 3 set alike keys
- Use with Stout faucet locking bracket
- Doesn't lock the faucet directly. Hence no damage to the faucet with the padlock.
- Brass body and SS U latch.






C257

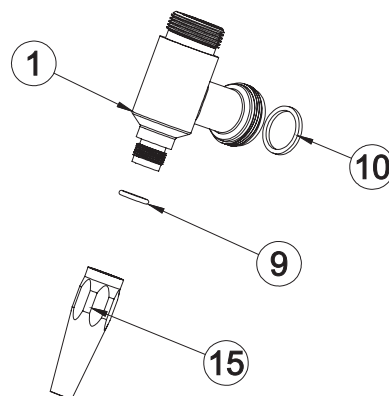
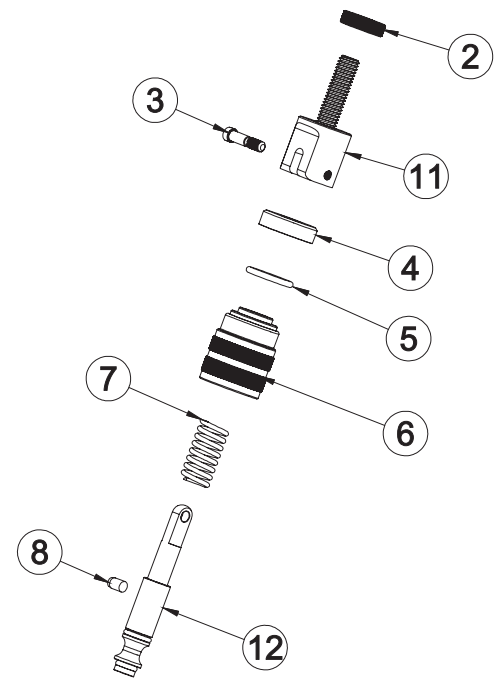


C457

STOUT / ALE FAUCET

Used for Stout Beers.

Part No.	C257	C457	C3074 
Faucet Material	Brass	Brass	Stainless Steel 304
Faucet Finish	Chrome Plated	PVD Vibrant Gold	SS Polished
Nozzle	Stainless Steel 304	Stainless Steel 304	Stainless Steel 304
Thread	3/8"x16 UNC	3/8"x16 UNC	3/8"x16 UNC
Connection	60 Teeth	60 Teeth	
Restrictor Plate	0.5mm Stainless Steel 316		



S.No.	Part Name	Part No.
1	Housing For Stout Faucet	C257.01
2	Knurled Stop Nut For Stout Faucet	C257.02
3	Screw For Stout Faucet	C257.04
4	Sliding Cap for Stout Tap	C257.05
5	Sliding Cap For O-Ring	C257.06
6	Brass Cap Nut	C257.07
7	Spring For Stout Faucet	C257.08
8	Pin For Stout Faucet	C257.10
9	O-Ring For Stout Faucet	C257.11
10	Coupling Gasket	C201.07
11	Lever Base with Full Thread Rod	C257.03
12	Stout Tap Piston Subassembly	C257.50
13	Inner Carton	C257.77
14	PolyBag for Hop & Grain Staining Bags	C163.70
15	Stout Faucet Leak out Pipe Subassembly	C257.51

STOUT TAP REPAIR KIT

Part No.	C2557
Standard Packing	144
Weight	0.01





STANDARD US FLOW / FOAM CONTROL FAUCET WITH SHANK

All Krome beer Faucets are designed to be the best faucets available on the market today. US Faucet with flow control features.

Part No.	C204
Faucet Material	Brass
Faucet Finish	Chrome Plated Brass

Features

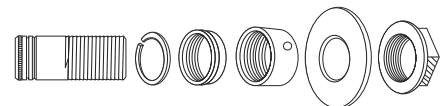
- Includes knob and 3-1/2" long shank with 5/8" BSP thread.
- Stainless steel wall flange.
- Smooth bore spout and interior to reduce foaming.
- Teflon friction ring for smooth, easy operation.
- Chrome plated Brass forged construction.
- Contact us for custom shank sizes and types.
- Brass or stainless lever handle.
- Shorter Shank length also available.



CHROME PLATED BEER SHANK ASSEMBLY - STANDARD

Part No.	C301	C302	C303	C304	C305	C306	C342	C343	C921
Length	2-1/8"	3-1/8"	4-1/8"	5-1/8"	6-1/8"	8-1/8"	10-1/8"	12-1/8"	14"-1/8"
Bore ID	1/4"	1/4"	1/4"	1/4"	1/4"	1/4"	1/4"	1/4"	1/4"
Thread	5/8"-14 BSP								
Material	Plated Brass								

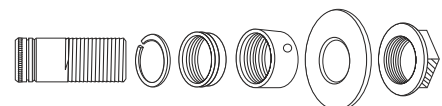
Part No.	C312	C313	C314	C315	C316	C354	C355	C922
Length	2-1/8"	3-1/8"	4-1/8"	5-1/8"	6-1/8"	10-1/8"	12-1/8"	14"-1/8"
Bore ID	3/16"	3/16"	3/16"	3/16"	3/16"	3/16"	3/16"	3/16"
Thread	5/8"-14 BSP							
Material	Plated Brass							

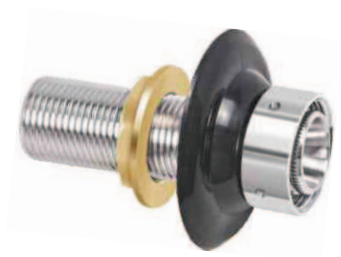


STAINLESS STEEL BEER SHANK ASSEMBLY - STANDARD

Part No.	C212	C213	C214	C234	C425	C928	C3142
Length	2"	3-1/8"	4-1/8"	5-1/8"	6-1/8"	8-1/8"	10-1/8"
Bore ID	1/4"	1/4"	1/4"	1/4"	1/4"	1/4"	1/4"
Thread	5/8"-14 BSP						
Material	Stainless Steel 304						

Part No.	C288	C289	C290	C291
Length	2-1/8"	3-1/8"	4-1/8"	5-1/8"
Bore ID	3/16"	3/16"	3/16"	3/16"
Thread	5/8"-14 BSP			
Material	Stainless Steel 304			





STANDARD WINE SHANKS

Part No.	C346	C347	C348
Length	3-1/8"	4-1/8"	5-1/8"
Bore ID	1/4"	1/4"	1/4"
Thread	5/8"-14 BSP	5/8"-14 BSP	5/8"-14 BSP
Material	Stainless Steel 316	Stainless Steel 316	Stainless Steel 316

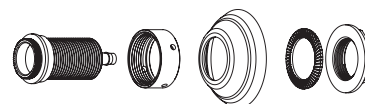


NIPPLE SHANK

Part No.	C300	C344	C420
Length	1.75"	1.75"	2.5"
Bore ID	3/16"	3/16"	1/4"
Thread	5/8"-14 BSP	5/8"-14 BSP	5/8"-14 BSP
Material	Brass	Stainless Steel 304	Stainless Steel 304
Finish	Chrome Plated Brass	Stainless Steel 304	Brushed Stainless

Features

- Fixed sleeve.
- Stainless steel 304 decorative Flange included.
- Forged Brass looking nut.



CHROME PLATED NIPPLE SHANK ASSEMBLY

Part No.	C318	C319	C320	C327
Length	2-3/4"	3-1/2"	4-1/2"	5-1/2"
Bore ID	1/4"	1/4"	1/4"	1/4"
Thread	5/8"-14 BSP	5/8"-14 BSP	5/8"-14 BSP	5/8"-14 BSP
Material	Plated Brass	Plated Brass	Plated Brass	Plated Brass

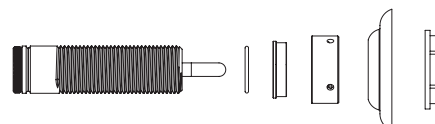


Part No.	C330	C322	C323	C324	C326	C3124
Length	2-3/4"	2-1/2"	3-1/2"	4-1/2"	5-1/2"	4-1/2"
Bore ID	3/16"	3/16"	3/16"	3/16"	3/16"	3/16"
Thread	5/8"-14 BSP	5/8"-14 BSP	5/8"-14 BSP	5/8"-14 BSP	5/8"-14 BSP	5/8"-14 BSP
Material	Chrome Plated Brass	Chrome Plated Brass	Chrome Plated Brass	Chrome Plated Brass	Chrome Plated Brass	Stainless Steel



CHROME PLATED BRASS ELBOW SHANK

Part No.	C426
Length	3-1/8"
Bore ID	3/16"
Thread	5/8"-14 BSP
Material	Brass
Finish	Chrome Plated





C339



C321

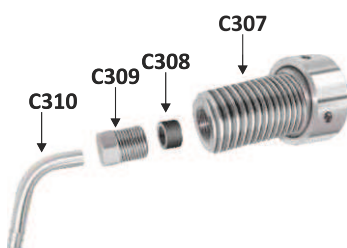
COLUMN SHANK ASSEMBLY

Part No.	C328	C332	C329	C339
Length	1.75"	1.75"	1.75"	1.75"
Bore ID	3/16"	1/4"	3/16"	1/4"
Thread	5/8"-14 BSP			
Material	Brass	Brass	Brass	Brass
Finish	Chrome Plated	Chrome Plated	Vibrant Gold Color	Vibrant Gold Color

Part No.	C321	C331	C336	C337
Length	1.75"	1.75"	1.75"	1.75"
Bore ID	1/4"	3/16"	3/16"	1/4"
Thread	5/8"-14 BSP			
Material	Stainless Steel 304			
Finish	SS Polished	SS Polished	Vibrant Gold Color	Vibrant Gold Color

Features

- Chrome Plated Brass Shank with Stainless Steel.
- 304 grade Elbow soldered into shank.
- Coupling Nut & Tower Flange are Vibrant Gold Color.



COMPRESSION SHANK ASSEMBLY

Part No.	C307	C308	C309	C310
Product	Shank Assembly	Shank Grommet	Compression Nut Male	Gooseneck Elbow
Bore ID	1/4"	3/16"	1/4"	3/16"
Material	Brass	NBR	Brass	Stainless Steel 304
Finish	Chrome Plated	Black	Chrome Plated	SS Polished



PERLICK THREAD IN SHANK ASSEMBLY

Part No.	C311	C341
Length	1.6"	1.6"
Bore ID	0.31"	0.31"
Thread	5/8"-14 BSP	5/8"-14 BSP
Material	Brass	Stainless Steel 304
Finish	Chrome Plated	SS Polished

Features

- O-Ring Included.
- Replacement shank for Perlick Tower



FAUCET PLUG

Need to seal a shank when the faucet is removed. Perfect for draft beer trailers when securing for storage or travel. Same threads as faucet.

Part No.	C130
Material	Brass
Thread	5/8"-14 BSP
Finish	Chrome Plated

Features

- Fits all beer and wine shanks.



REPLACEMENT PLASTIC DECORATIVE FLANGE FOR SHANKS

Part No.	C018
Material	Plastic
Finish	Black



STAINLESS STEEL 304 SHANK FLANGE

Part No.	C127	C127x100
Material	Stainless Steel 304	Stainless Steel 304
Finish	SS Polished	SS Polished



LOCKING FLANGE FOR WALL SHANK

Part No.	C126
Thread	5/8" -14 BSP
Material	Brass
Finish	Brass



WALL MOUNTABLE SHANK ASSEMBLY

Good for cold rooms / tap rooms. - Dispense thru the wall.

Part No.	C125
Length	24"
Bore ID	3/16"
Thread	5/8"-14 BSP
Material	Brass
Finish	Plated Brass

