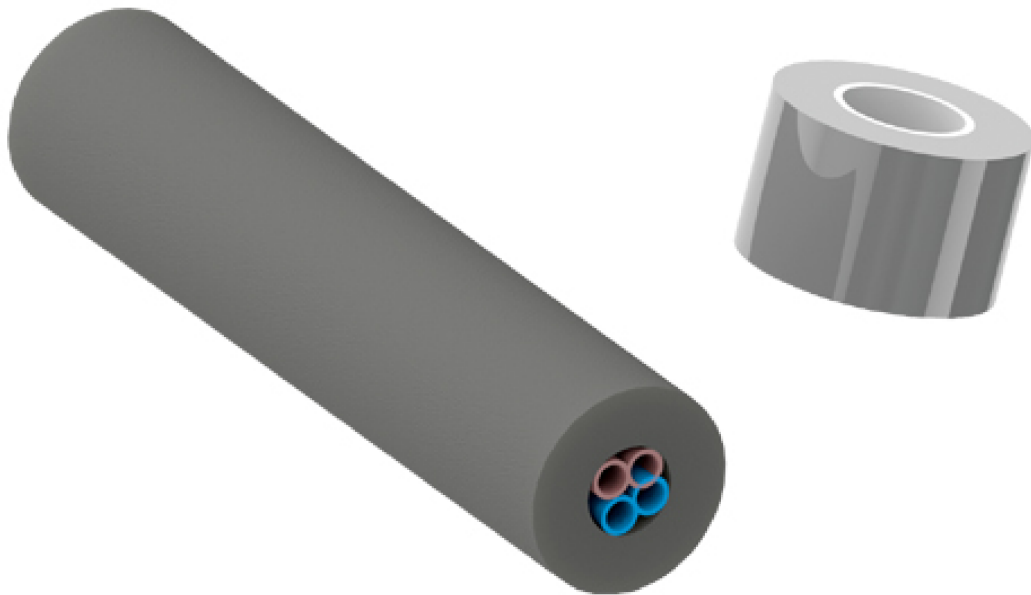


- Pre—wrapped glycol only trunk line
- Insulate to protect from freezing
- Ideal for running glycol lines from power pack to walk—in cooler
- Trunk lines are cut to custom lengths*

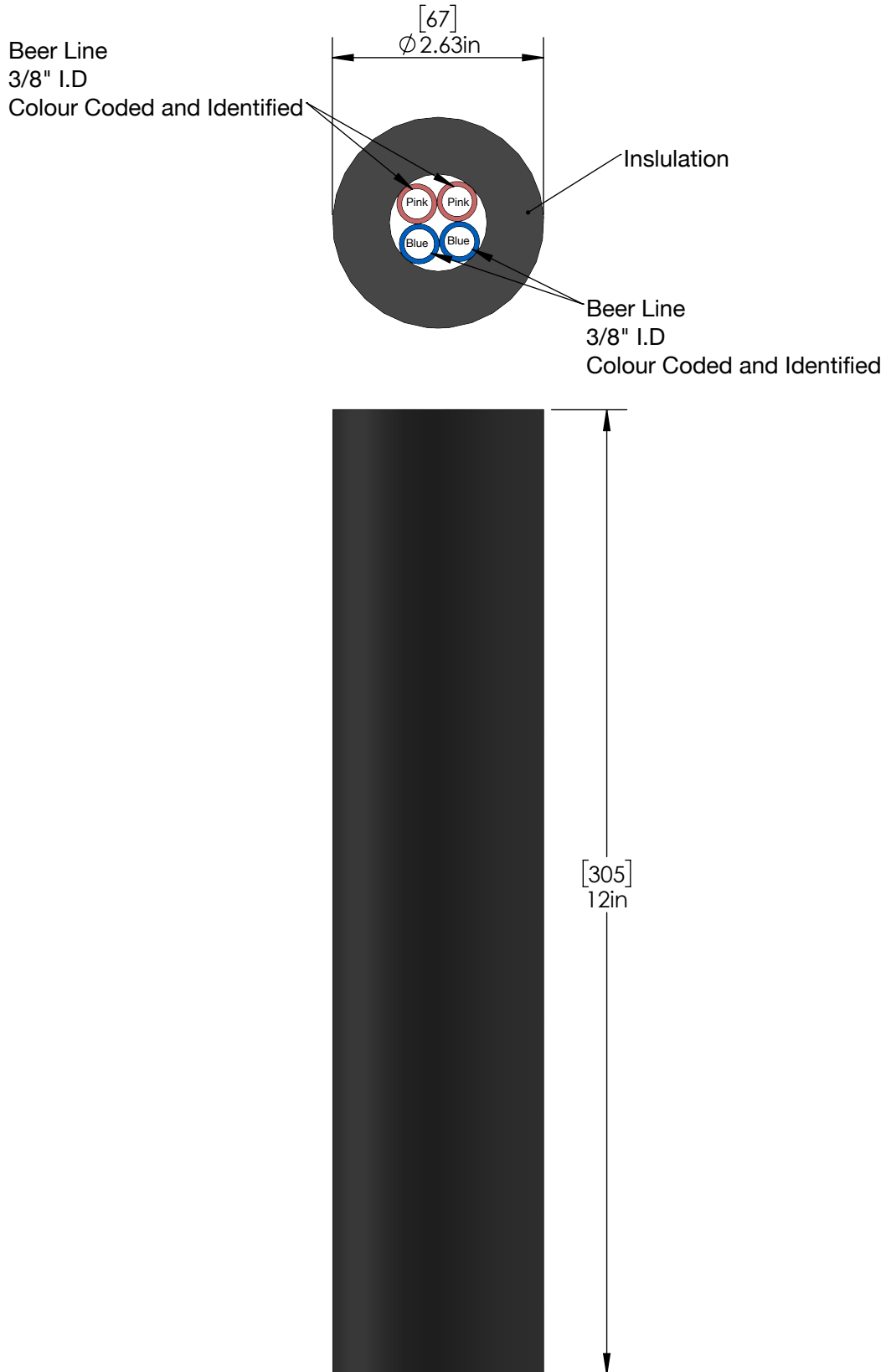


C2651

Option Available:-

| Part No | Trunk Lines | ID |
|---------|-------------|-----------|
| C2650 | 2 | 3/8" I.D. |

Product Dimensions:-



Revision # 1 - Copyright © 2017 Krome Dispense. All Rights Reserved

US & Canada :- +1-678 666 2001

Asia:- +91-9814203010

Krome Dispense reserves the right to make revisions to product specifications without any notice

For most updated specification sheet , go to www.kromedispense.com

