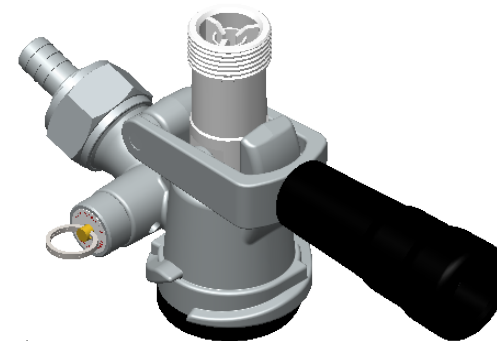
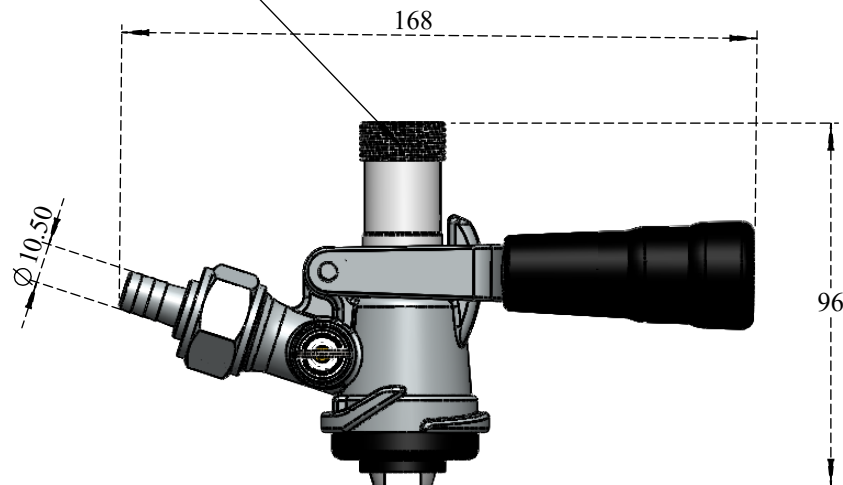


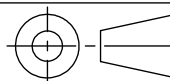
Pressure Release valve for Releasing pressure when it exceeds 60PSIG

Threading 5/8" x 14 BSP



PACIFIC

The Information Contained in this drawing is the property of PACIFIC MERCHANTS and should not in any way divulged to any third party without the prior written consent of the company



Density	0.00 g/mm ³
Drawing Weight	622.77 g
Actual Weight(g)	568g

UNLESS OTHERWISE SPECIFIED:
DIMENSIONS ARE IN MILLIMETERS

SURFACE FINISH LIMIT: 1.6
TOLERANCES:
LINEAR:
ANGULAR:
Deburr Sharp Edges**

DRAWN BY	:Daljeet
DATE	:27-08-2021
CHKD BY	:-
DATE	:-
APPD. BY	:-
DATE	:-

DIMENSIONS

Tolerance Dimension

ALL DIM. IN M.M.

* - IMPORTANT

** - CRITICAL

*** - MOST CRITICAL

	0.5-3	>3-6	>6-30	>30-120	>120-400	>400-1000
±0.05	±0.05	±0.05	±0.1	±0.15	±0.2	±0.3
±0.2	±0.2	±0.5	±1	±1	±1	±1
≤10	>10-50	>50-120	>120-400	>400		
±1*	±0.3*	±0.2*	±0.1*	±0.5*		

MATERIAL	
SURFACE AREA	309257.18 mm ²
VOLUME	234567.27mm ³
REVISION	:01
FINISH	:Electro Polish
PART NO.	C701Line

TITLE

D System Keg Coupler Line Drawing

All values are Nominal and can Vary to Some Extent

Last Revision 1