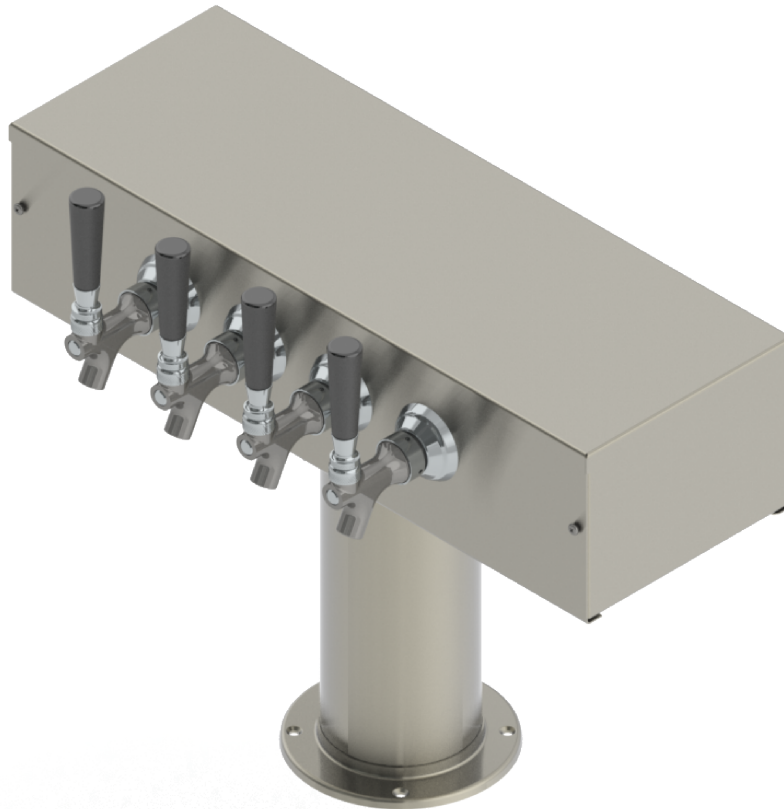


- Made of High Quality Stainless Steel for Durability & Reliability
- Copper Glycol Recirculation Loop Tube for Optimum Cooling.
- Modern Look with Brushed Stainless Finish
- Take your pouring to bold new heights



C957

Brushed Stainless

Revision # 1 - -
Copyright © 2017 Krome Dispense. All Rights Reserved



US & Canada :- +1-678 666 2001

Asia:- +91-9814203010

Krome Dispense reserves the right to make revisions to product specifications without any notice

For most updated specification sheet , go to www.kromedispense.com

Specification

| Part Number | No. of Faucets | Finish | Cooling System |
|-------------|----------------|-------------------|---------------------------|
| C957 | 4 | Brushed Stainless | Glycol Recirculation Loop |
| C510 | 4 | SS Polished | Air Cooled |
| C1017 | 4 | Brushed Stainless | Air Cooled |

Product Dimensions:-

