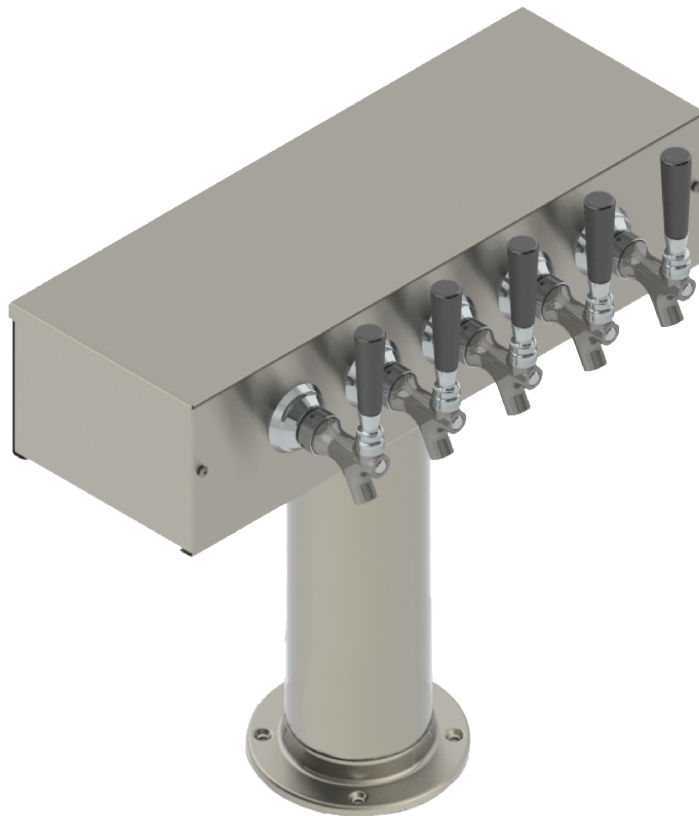


- Made of High Quality Stainless Steel for Durability & Reliability
- Copper Glycol Recirculation Loop Tube for Optimum Cooling
- Modern Look with Brushed Stainless Finish
- Take your pouring to bold new heights



C985

Brushed Stainless

Revision # 1 - -  
Copyright © 2017 Krome Dispense. All Rights Reserved



US & Canada :- +1-678 666 2001

Asia:- +91-9814203010

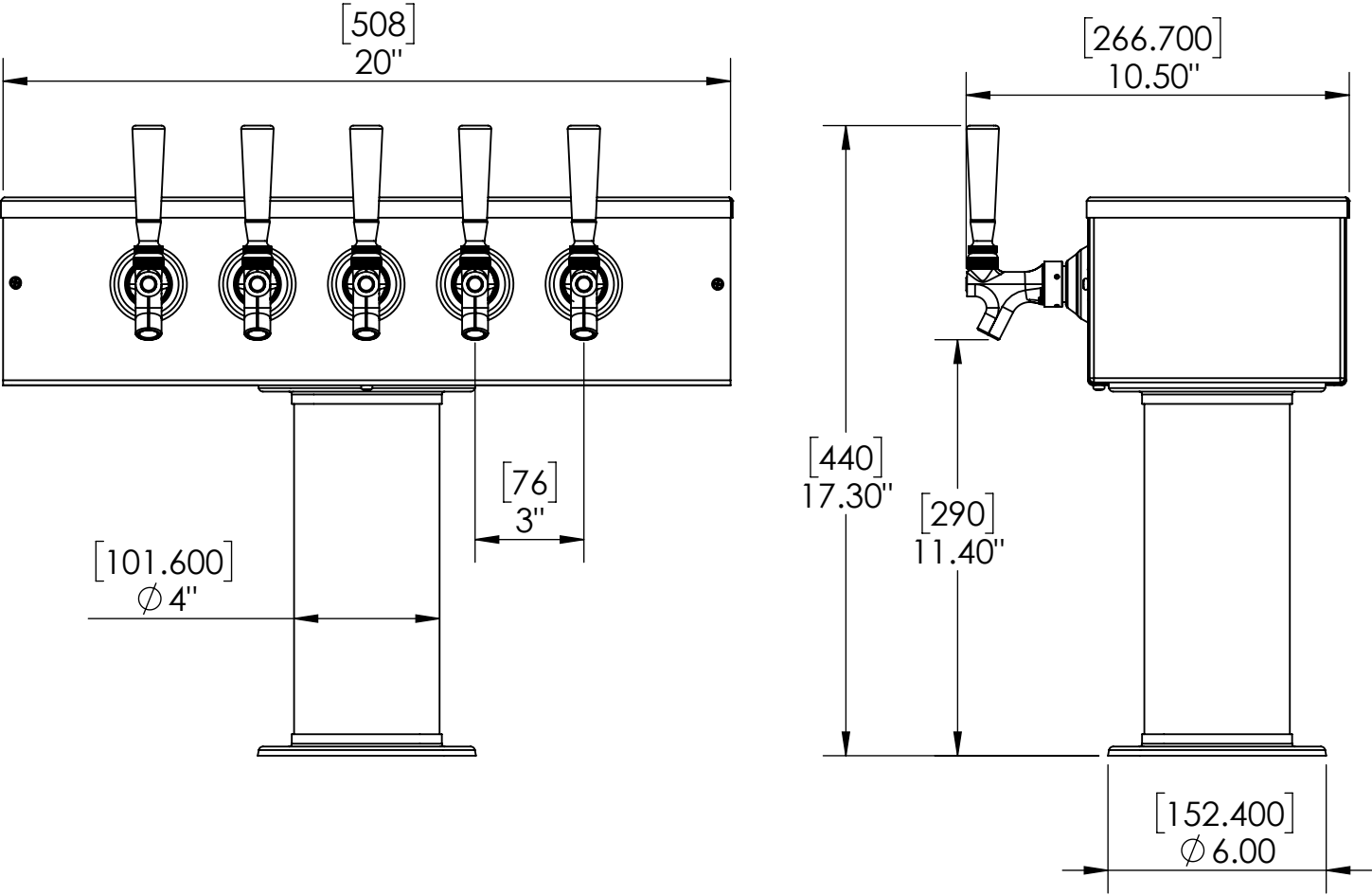
Krome Dispense reserves the right to make revisions to product specifications without any notice

For most updated specification sheet , go to [www.kromedispense.com](http://www.kromedispense.com)

# Specification

Part Number	No. of Faucets	Finish	Cooling System
C985	5	Brushed Stainless	Glycol Recirculation Loop
C1385	5	Brushed Stainless	Glyco Cold Technology
C1005	5	Brushed Stainless	Air Cooled

## Product Dimensions:-



Revision # 1 - -  
Copyright © 2017 Krome Dispense. All Rights Reserved