



## PRECISION PLUS CO2 REGULATOR USA

Part No.	<b>C870</b>
Outlet	1
Valve Type	5/16" Barb
Outlet Connection	0-60 PSI
Inlet Connection	0-3000 PSI
Filter Capacity	Double inlet filter (200 microns/100 microns)
Finish	Chrome Plated



## PRECISION NITROGEN PRIMARY REGULATOR – CGA THREAD

Part No.	<b>C5610</b>
Suitable For	5/16" ID Gas Hose
Inlet Connection	0-3000 PSI
Outlet Connection	0-160 PSI
Performance	1 Pressure / 1 Keg
Valve Type	3/8" Barb
Material	Brass
Finish	Chrome Plated



## PRECISION PRIMARY CO2 REGULATOR – 1 OUTLET

Part No.	<b>C5613</b>
Outlet	1
Outlet Connection	0-60 PSI
Inlet Connection	GGA 320
Valve Type	5/16" Barb
Thread Size	3/8"
Finish	Chrome Plated
Material	Brass



## PRECISION CO2 REGULATOR – 2 OUTLET CGA 320

Part No.	<b>C5614</b>
Outlet	2
Outlet Connection	0-60 PSI
Inlet Connection	0-3000 PSI
Valve Type	5/16" Barb
Thread Size	3/8"
Material	Brass
Finish	Chrome Plated



### WALL BRACKET WITH NUT (FOR ECONOMY SERIES GAS REGULATORS)

Part No.	<b>C366</b>
Material	Stainless Steel 304
Finish	SS Polished



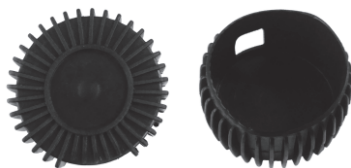
### Co2 REGULATOR REPLACEMENT GAUGE – RIGHT HAND

Part No.	<b>C001</b>
Thread Size	1/4"
Diameter	1.97"
Material	Polycarbonate
Type	Right Hand
Performance	0-3000PSI



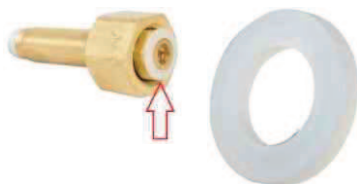
### Co2 REGULATOR REPLACEMENT GAUGE – TOP

Part No.	<b>C002</b>
Thread Size	1/4"
Diameter	1.97"
Material	Polycarbonate
Type	Right Hand
Performance	0-3000PSI



### CO2 REGULATOR GAUGE COVER

Part No.	<b>C5521</b>
Material	Rubber
Color	Black



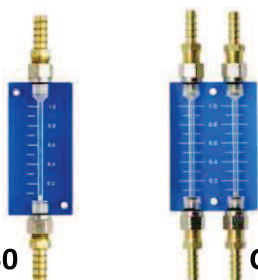
### NYLON CO2 INLET SEAL (PACK OF 10PCS)

Part No.	<b>C871.06x10</b>
Material	Nylon
Finish	Raw
OD	0.71 inches
ID	0.47 inches
Chamfer	0.20 x 45 degrees



## HIGH PRESSURE CO2 HOSE CGA 320 X 1/4" MPT

Part No.	<b>C749</b>
Material	ABS
Hose Length	6 feet



**C3250**

**C3251**

## Co2 LEAK DETECTOR

Part No.	<b>C3250</b>	<b>C3251</b>
Gas Line	Single	Double
Length	6"	6"
Width	1-7/8"	2-1/2"
Hose Barb I.D.	1/4"	1/4"
Hose Barb O.D.	3/8"	3/8"



## NITROGEN ALUMINUM CYLINDER

Part No.	<b>C2329</b>
Material	Aluminium
Capacity	5 Lb
Height	17.50"
Diameter	5-1/4"



## 5 LB ALUMINIUM CO2 CYLINDER

Part No.	<b>C2328</b>
Material	Aluminium
Capacity	5 LB
Height	17.50"
Diameter	5.25"
Valve Thread	CGA-320



## CO2 PRESSURE TESTER FOR D AND S SYSTEM

Part No.	<b>C5600</b>
Weight	1.30 Lbs
Length	14.65"
Width	1.50"



### Co2 ADAPTER FOR CONVERTING CGA 320 FEMALE (US)

Part No.	<b>C698</b>
Material	Brass
Finish	Chrome Plated Brass
Thread Size	DIN 477 x CGA-320



### PRIMARY REGULATOR REPAIR KIT

Part No.	<b>C943</b>
----------	-------------

- This is a huge feature on these compressors, inasmuch as on other compressors you have to replace the complete regulator assembly.



### STAR SEAL-CO2 WASHER

Part No.	<b>C414</b>
Material	Brass
Thread Size	M8 x 1.5

**NEW**



### REGULATOR GAUGE CAGE SET, SS 304

Part No.	<b>C133</b>
Material	Stainless Steel 304
Finish	SS Polished



### CO2 GAS REGULATOR "Y" FITTING

Part No.	<b>C259</b>
Material	Brass
Finish	Chrome Plated Brass
Thread Size	1/4MPT x 1/4 FPT x 1/4 FPT



**C548**

**C549**

## CO2 GAS CYLINDER HOLDERS

Part No.	<b>C548</b>	<b>C549</b>
Bracket Material	Steel	Steel
For	1 Cylinder	2 Cylinder



## DRAFT BEER NITROGEN REGULATOR TO CO2 TANK ADAPTER

Part No.	<b>C295</b>
Material	Brass
Thread Size	CGA-320 x CGA 580



## DRAFT BEER CO2 REGULATOR TO NITROGEN TANK ADAPTER

Part No.	<b>C296</b>
Material	Brass



**C071**



**C5571**

## SECONDARY REGULATOR CONNECTOR

Part No.	<b>C071</b>	<b>C5571</b>
Material	Brass	Brass
Finish	Chrome Plated Brass	Chrome Plated Brass
Thread Size	1/4"x1/4"	1/4" NPT
Thread	Right Hand Thread	Left Hand Thread



## CO2 BULK HEAD

Part No.	<b>C075</b>	<b>C076</b>
Material	Stainless Steel 304	Stainless Steel 304
Thread Size	1/4" MFL	1/4" MFL
Length	4"	2-7/8"

C5506

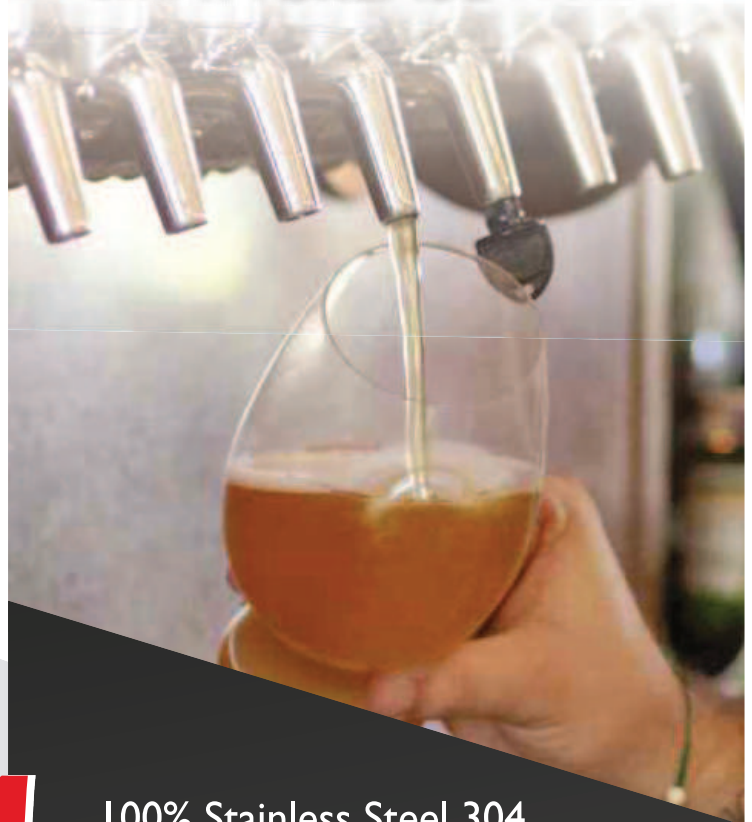


## Beer Foam Detector

Foam on Beer detectors – F.O.B is a small device that results in big savings. FOB shuts off beer flow immediately after the keg goes empty but keeps the beer line full of beer. So when you tap in a new keg, no beer is



Reduce **BEER WASTE**  
and **INCREASE** Profit



- 1** 100% Stainless Steel 304.
- 2** Easy to install & clean.
- 3** Designed for installers comfort.
- 4** 3 Years Extended Warranty.
- 5** Perfect for LONG DRAW Systems.



## Easy to Maintain



No need to remember last cleaning week of FOB, just keep the needle on week and month.



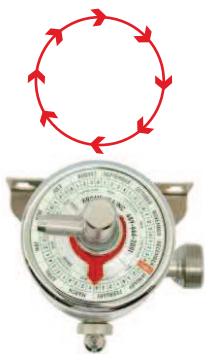
Easy to replace vent valve



Easy to replace sight glass while multiple FOB are mounted on the panel in cold room.



## Easy to Install



Rotatable vent valve



**LEFT - RIGHT**

Easy switch left side to right side beer line connection by interchanging wall bracket



**100%  
Stainless Steel**



## BEER BENEFIT (BEER FOAM DETECTOR) - FOB

Part No.	<b>C786</b>
Material	Food Grade Plastic
Finish	Raw
Thread Size	5/8" X 14 BSP

### Features

- More output / Yield per beer keg
- Economical Food grade plastic construction
- Affordable to replace
- Easy switch left side to right side beer line connection by interchanging Black wall bracket
- Larger Chamber volume ensures a higher flow rate of beer

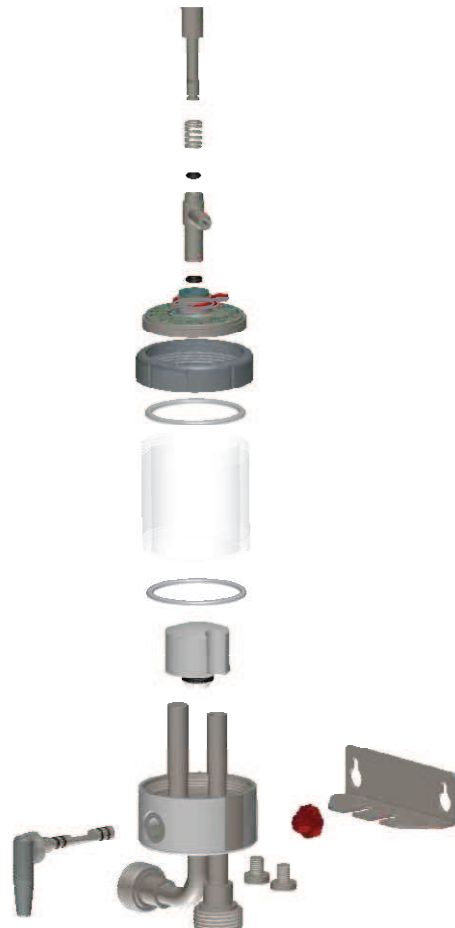
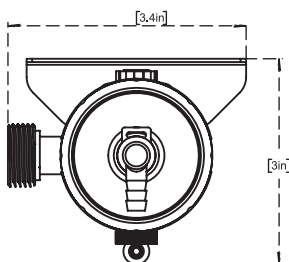
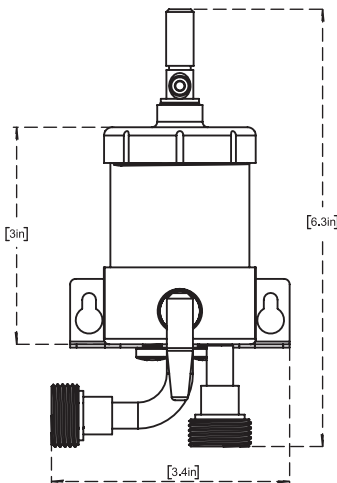


## FOB CAM LEVER 5/8" BSP STAINLESS STEEL

Part No.	<b>C5506</b>
Material	Stainless Steel And ABS Plastic
Finish	Brushed
Thread Size	5/8" X 14 BSP

### Features

- Made from Stainless Steel
- Much greater savings is seen at installations with longer than average supply lines like Stadiums, Airports, and Hotels.
- It Reduces the amount of CO2 or Beer Gas used because it no longer fills the supply line that can escape out of the tap.





# C5507



## FOB CAM LEVER 5/8" BSP STAINLESS STEEL

Part No.	<b>C5507</b>
Material	Stainless Steel And ABS Plastic
Finish	Brushed
Thread Size	5/8" X 14 BSP

## FLOW REVERSAL VALVE

Part No.	<b>C5549</b>
Material	Polypropylene
Finish	Raw
Body Material	Polypropylene
Operating Temperature	30°– 120°F
Weight	3.3 oz
Hose Barb I.D.	1/4"
Dimensions	5.375 H x 4.8125 W x 2.375 D inches



## FOB Drain Kit

Part No.	<b>C4108</b>
Kit Includes	<ul style="list-style-type: none"> <li>• Drain Bottle.</li> <li>• PVC Clear Tube – 1/4" ID</li> <li>• Stainless Steel Elbow 1/4"x1/4"</li> <li>• Velcro Tie</li> <li>• Screw For Pillars – 20</li> <li>• Plastic T for 1/4" Hose</li> </ul>



## FLOJET BEER PUMP – G56

Part No.	<b>C2151</b>
Material	Plastic
Pump Design	Positive Displacement, Double Diaphragm
Power Source	CO2 Gas, Compressed Filtered Air
Flow Rate	5 GPM
Weight	1.93 Lbs
Standard Packing	12