

C901 Beer Line Cleaner and Sanitizer



Beer line Cleaner & sanitizer Part # C901

VERIFICATION AGENT WITH LINE CLEANING PROPERTIES, IN POWDER FORM FOR USE IN THE BEER AND SOFT DRINK INDUSTRY BASED ON THE THONHAUSER PERSULPHATE TECHNOLOGIES

Monitoring of the cleaning and disinfection process with the COLOR INDICATOR. CHLORINE-FREE – disinfection takes place through the production of ACTIVE OXYGEN. Compliant with DIN 6650 and HACCP norms.

CLEANING & VERIFICATION MADE EASY

1) DISSOLVE POWDER	Always pre-rinse cleaning-container! Add content of 1 packet (1.6oz) of TM DESANA MAX [®] into flowing jet of luke warm water (35 °C / 100 °F) and fill up container with 4,5 lit / 1.2gal of water. Take blank from solution.
2) SHAKE: SOLUTION PURPLE	Close the container. Mix and shake well! Color of the fresh solution: PURPLE.
3) ATTACH CONTAINER / BARREL	Attach the tap head of the beverage container, i. e. beer barrel, under CO ₂ -pressure to the cleaning container.
4) FILL TAP WITH SOLUTION	Open tap and leave running until cleaning solution flows through. Heavily soiled solution turns YELLOW.
5) LET SOLUTION SOAK FOR 3 MINUTES SOLUTION TURNS GREEN	Close tap. Let the TM DESANA MAX [®] -cleaning solution soak in the lines for 3 minutes. TM DESANA MAX [®] dissolves deposits in the installation during this time and turns GREEN. Fill lines again with fresh TM DESANA MAX [®] -solution and let it soak for 3 minutes.
REPEAT UNTIL NO LONGER GREEN	Repeat steps 4 + 5 until cleaning solution is no longer GREEN.
DONE WHEN PURPLE AGAIN	When the solution from the pipe has the same color as the "blank" sample, the lines are clean and in perfect hygienic condition!
6) RINSE WITH TAP WATER	Rinse with tap water as follows: for 7mm I. D. tubes use a minimum of 200ml and a maximum of 1000ml per meter of tubing (see expertise of the University of Vienna, 05-02-2003). Verify rinsing by means of a pH-test strip: The pH of the rinsing water coming out of the tap has to correspond with the pH of original tap water.

BENEFITS OF TM DESANA MAX[®] WITH COLOR INDICATOR

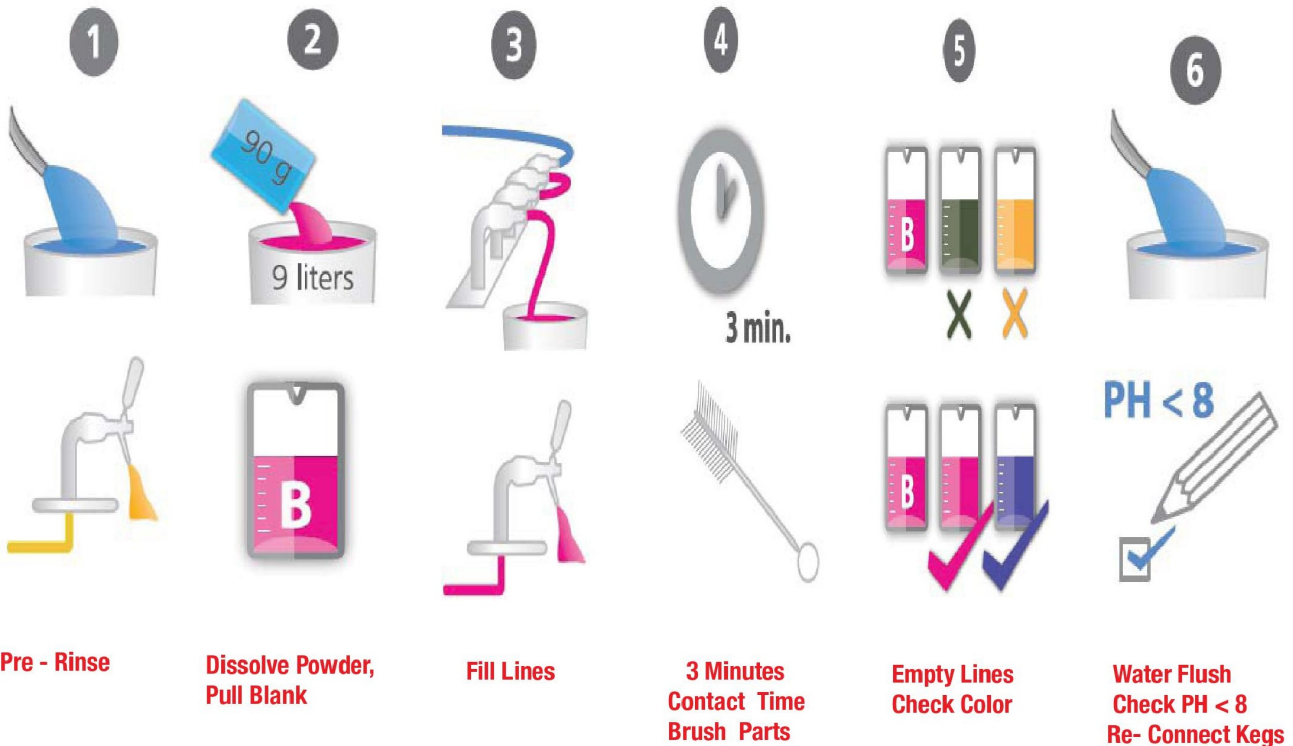
- Dispensing equipment is easily kept in an excellent condition!
- Chlorine-free - cleaning is environmentally friendly and easy to ship.
- Monodose packaging guarantees safe and easy handling, powder dissolves quickly.
- Microbiologically clean dispensing equipment and verification of clean with the color change technology
- The VIOLET-GREEN color indicator safety is comparable to laboratory testing, without extra cost.
- Customers obtain optimal quality beverages



ATTENTION	Prepare solution immediately before use! Wear protective clothing (gloves, glasses) when handling the powder product!
DRAINING	TM DESANA MAX [®] -solution is drained together with running water. The pH goes down to 8.0-9.5 through usual dilution.
HAZARD IDENTIFICATION	Powder is C Corrosive; mixed solution is Xi Irritant. Product contains Disodium Peroxodisulphate. For further information please refer to Material Safety Data Sheet.
USE BIOCIDES SAFELY. ALWAYS READ THE LABEL AND PRODUCT INFORMATION BEFORE USE.	

www.krome-dispense.com

Steps for using Beer Line Cleaner and Sanitizer



Pre - Rinse Cleaning Container and all lines with tap water

Don't waste the flushed beer - collect it in clean jugs

Always wear safety glasses and safety gloves!
Add 1 Packet of Beer Line Cleaner and Sanitizer into flowing jet of luke warm water. imingle well. Put blank for comparing colors later on.

Fill Lines with cleaning solution. Make sure all inner surfaces are covered with solution during contact time.

Soaking : Minimum contact time 3 minutes. Re-circulating: re -Circulated for 10 minutes

Empty Lines: When solution has turned green or yellow, fill lines again with fresh solution. When solution matches color of blank or has bluish color after a contact time of 3 minutes, the lines are in perfect hygienic condition.

After the cleaning always flush off chemical with tap water. Check Ph of rinsing water is below ph8 . Re-connect beer KEGs and throw away first shot of beer.